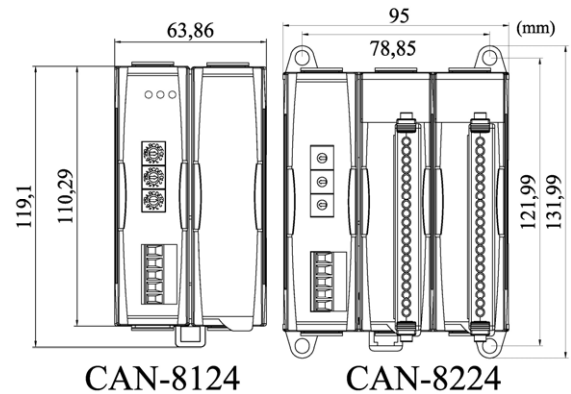


## DeviceNet Remote I/O Unit with 1/2 I/O Expansions



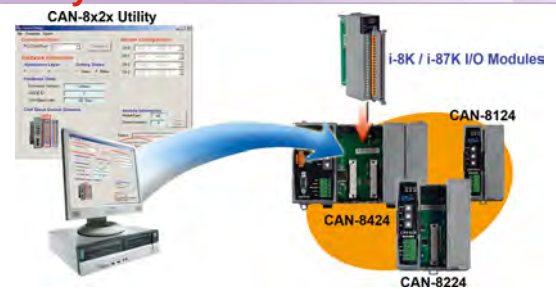
### CAN-8124 / CAN-8224

The CAN-8124/CAN-8224 main unit based on the modular design offers many good features to the users and provides more flexibility in data acquisition and control system. CAN-8124 and CAN-8224 are the DeviceNet Group 2 only Server devices. They are applied as the slaves in DeviceNet network. In addition, ICP DAS also presents a Utility tool to allow users to configure and create the EDS file for the specific IO modules plugged in. CAN-8124/CAN-8224 are specifically fit for the distribution system. With the hot-swap function, it is convenient for maintaining system.

#### Features

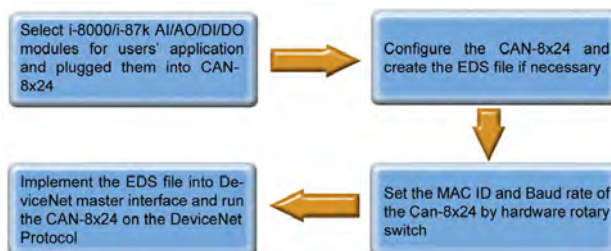
- Number of Nodes: 64 max.
- Baud Rate: 125K, 250K, 500K
- Support Message Groups: Group 2 only Server
- I/O Operating Modes: Poll, Bit-Strobe, Change of State / Cyclic
- Device Heartbeat & Shutdown Message
- Produce EDS file Dynamically
- No. of Fragment I/O: 128 Bytes max. (Input / Output)
- MAC ID Setting by Rotary Switch
- Baud Rate Setting by Rotary Switch
- Status LED: NET, MOD, PWR
- Support Hot Swap and Auto-Configuration for high profile I-87K I/O Modules

#### Utility Features

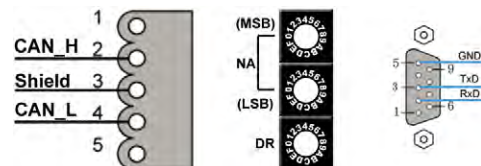


CAN-824 main unit can be plugged in the DCON (I-8K/I-87K) IO modules to create a customized DeviceNet slave device and application. In order to allow user to easy apply the device on the network, ICP DAS also provides the Utility tool to configure the IO connection path, assembly and application objects information and create the EDS file of the device.

#### Design Flowchart



#### Pin Assignments



NA: Node Address      DR: Device Rate

Rotary Switch Value(DR)	Baud rate (K BPS)
0	125
1	250
2	500

Art. No. 112967

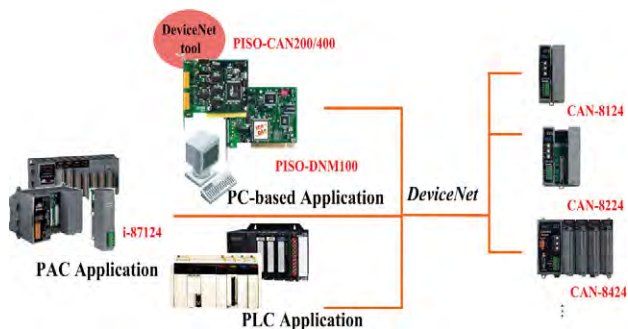
Art. No. 112968

Item	CAN-8124	CAN-8224
CPU	80186, 80MHz	
SRAM	512K bytes	
Flash Memory	512K bytes	
EEPROM	2048 bytes ( can be up to 128K bytes or change to 2K/8K FRAM )	
NVRAM	32 bytes	
Real Time Clock	16 bit; Year-2000 compliance; seconds, minutes, hours, date of the month; month, year, valid up from 1980 to 2079	
Watch Dog Timer	CPU Built-in	
COM 1	RS232 (Configuration port)	
CAN Port	5-pin screw terminal connector	
CAN Controller	Phillips SJA1000T CAN Controller	
CAN Transceiver	Phillips 82C250 CAN Transceiver	
CAN Protocol	CAN 2.0A/2.0B	
Isolated	2500Vrms on CAN side	
Terminal Resister	120Ω terminal resister selected by jumper	
Transfer Rate	up to 1Mbps	
I/O Expansion Slot	1 slot	2slots
Power Supply	20W unregulated +10Vdc to +30Vdc	
Power Consumption	1.7 W	2W
Operating Temp.	-25°C ~75°C	
Storage Temp.	-35°C ~85°C	
Humidity	5~95%	
Dimensions	64mm x 91mm x 119mm (W x D x H)	95mm x 91mm x 132mm (W x D x H)

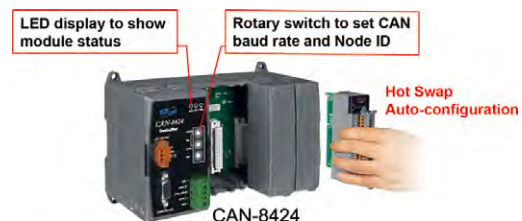
## LED Indicators

LED	Description
PWR	Indicate the status of power supply
MOD	Indicate the main or modules status
NET	This LED indicates the DeviceNet network status

## Application



## Hot Swap & Auto-configuration



## Ordering Information

CAN-8124	DeviceNet remote I/O unit with 1 empty slot	Art. No. 112967
CAN-8224	DeviceNet remote I/O unit with 2 empty slot	Art. No. 112968