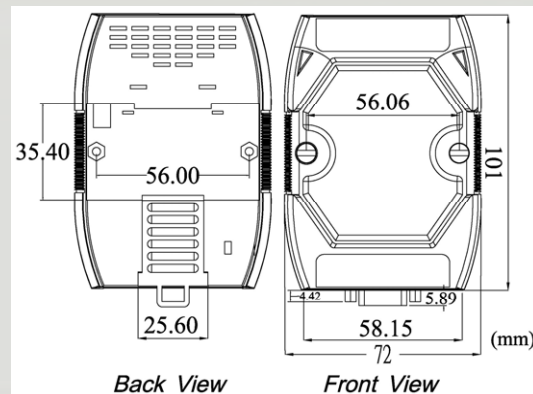




Intelligent USB to CAN Converter



I-7565

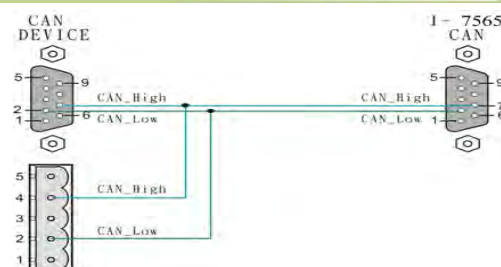
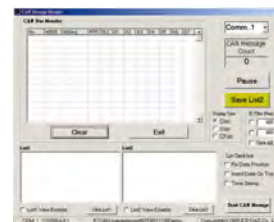


Dimensions

The I-7565 is a cost-effective device for integrating the CAN bus to the PC by using the standard USB interface. Nowadays the interface is present in every new PC and is supported by the Windows 98, Me, 2000, XP and Linux operating systems. If you establish the connection between the I-7565 and the PC during the runtime of the computer, the PC automatically loads the relevant device driver (plug & play). After installing the I-7565, the PC can be access/control the CAN device by the utility tool or users' application, and be the CAN host, network monitor or CAN-interface HMI. This module let your PC communicate with CAN devices easily from with USB interface.

Features

- Microprocessor inside with 20MHz
- RoHS design
- Fully compliant with USB 1.1/2.0(Full Speed)
- Fully compatible with the ISO 11898-2 standard
- Powered by the USB bus
- 82C250 CAN transceiver
- Transmission speed up to 1M bps for CAN and 921.6 kbps for USB
- Support both CAN 2.0A and CAN 2.0B
- Built-in jumper to select 120 ohm terminal resistor
- Power, data flow and error indicator for CAN and USB
- Watchdog inside
- Support Windows 98/ME/2000/XP, and Linux OS
- CAN bus Baud rate configuration
- CAN acceptance filter configuration
- CAN 2.0A or 2.0B specific selection
- Error code response selection
- Utility tool to transmitting / receiving CAN messages
- Show CAN messages by hex or decimal format
- CAN messages with timestamp
- Easy-to-use data logger for the diagnosis of the CAN networks and recording of the received data.
- Send the predefined CAN messages manually or cyclically



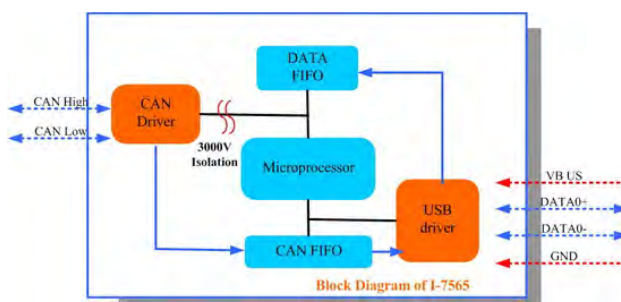


Hardware Specifications

Hardware	
CPU	8051, 20 MHz or compatible
Watchdog	Watchdog IC
CAN Interface	
Controller	Microprocessor inside with 20MHz
Transceiver	NXP 82C250
Connector	9-pin male D-Sub (CAN_GND, CAN_L, CAN_SHLD, CAN_H, N/A for others)
Baud Rate (bps)	10 k, 20 k, 50 k, 125 k, 250 k, 500 k, 800 k, 1 M
Transmission Distance (m)	Depend on baud rate (for example, max. 1000 m at 50 kbps)
Isolation	3000 V _{DC} for DC-to-DC, 2500 V _{rms} for photo-couple
Terminator Resistor	Jumper for 120 Ω terminator resistor
Specification	ISO-11898-2, CAN 2.0A and CAN 2.0B
USB Interface	
Connector	USB Type B
Transmission speed	921.6 kbps
Specification	USB 1.1 and USB 2.0
LED	
Round LED	ON LED, ERR LED
Software	
Driver	Windows 98/ME/NT/2K/XP, Linux
Power	
Power supply	By USB interface
Power Consumption	1.5 W
Mechanism	
Installation	DIN-Rail
Dimensions	72mm x 33mm x 107mm (W x L x H)
Environment	
Operating Temp.	-25 ~ 75 °C
Storage Temp.	-40 ~ 80 °C
Humidity	5 ~ 95% RH, non-condensing

Application

Block Diagram



Ordering Information

I-7565-G CR

Intelligent USB to CAN Converter (RoHS)

Art. No. 116800