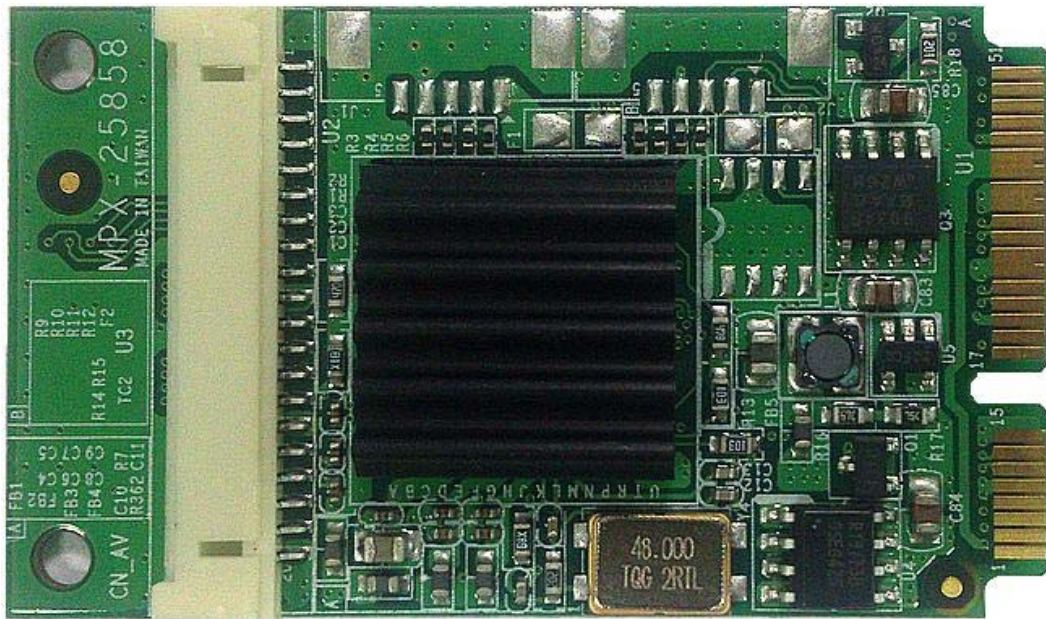


MPX-25858

User's Manual

Edition 1.0
2013/03/18



Copyright

Copyright 2011 all rights reserved. This document is copyrighted and all rights are reserved. The information in this document is subject to change without prior notice to make improvements to the products.

This document contains proprietary information and protected by copyright. No part of this document may be reproduced, copied, or translated in any form or any means without prior written permission of the manufacturer.

All trademarks and/or registered trademarks contains in this document are property of their respective owners.

Disclaimer

The company shall not be liable for any incidental or consequential damages resulting from the performance or use of this product.

The company does not issue a warranty of any kind, express or implied, including without limitation implied warranties of merchantability or fitness for a particular purpose.

The company has the right to revise the manual or include changes in the specifications of the product described within it at any time without notice and without obligation to notify any person of such revision or changes.

Trademark

All trademarks are the property of their respective holders.

Any questions please visit our website at <http://www.commell.com.tw>.

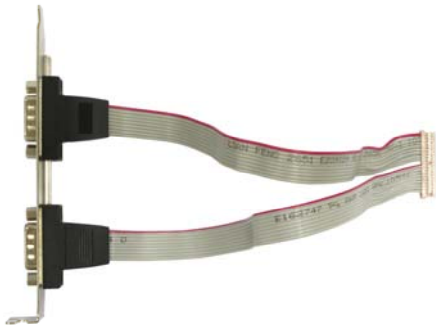
Packing List:

Hardware:

MPX-25858 Mini PCI Express Capture Card x1

Cable kit:

Cable:



1 x DF14 to dual D-sub 9 Cable
(OAL2DB9-H20)



1 x 8-ch BNC Video input Cable
(OALBNCE8-3)



1 x 8-ch RCA Audio input Cable
(OALDB9-AUD8)

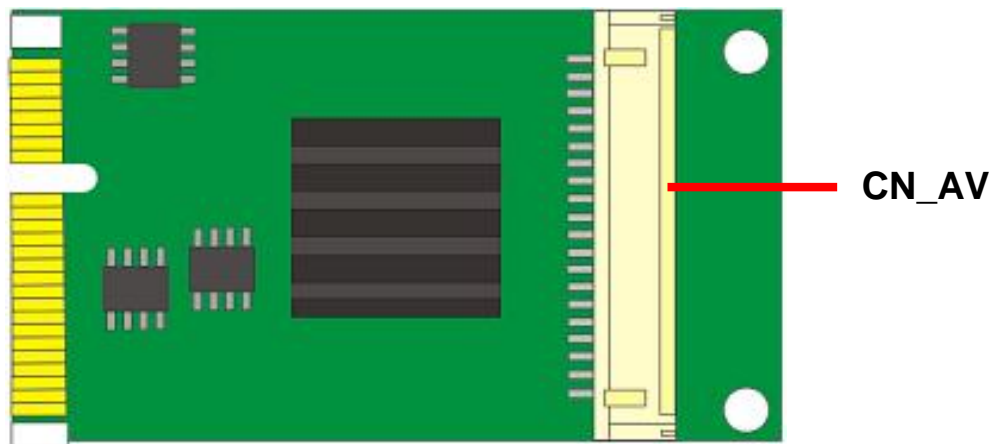
CD Content:

Drivers & User's Manual

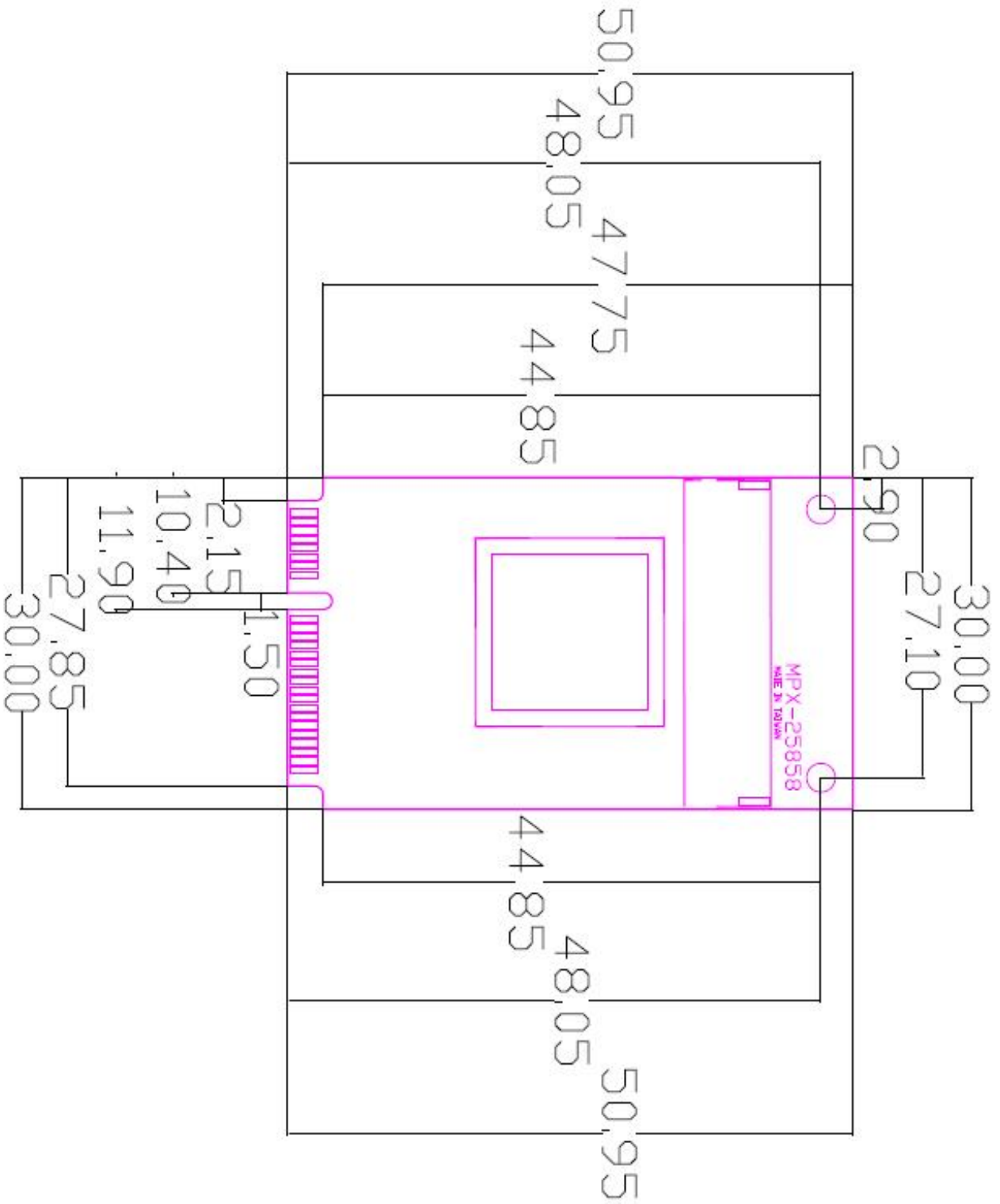
1.0 <Product Specification>

General Specification	
Form Factor	PCI Express mini card
Controller	One CX-25858 chip
Accessories	1 x 20-pin DF14 to 2 x D-sub 9 Cable 1 x 8-ch BNC Video input Cable 1 x 8-ch RCA Audio input Cable
Display rate	8 channels video inputs share with 240 fps
Output Type	NTSC/PAL
Dimensions (L x W)	51mm x 30mm

1.1 <Component Placement>



1.2 <Mechanical Drawing>

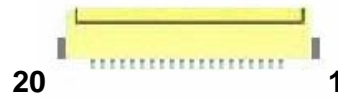


Unit: mm

1.3 <Connector Reference>

Connector: CN_AV

Type: DF14 20-pin pitch=1.25mm



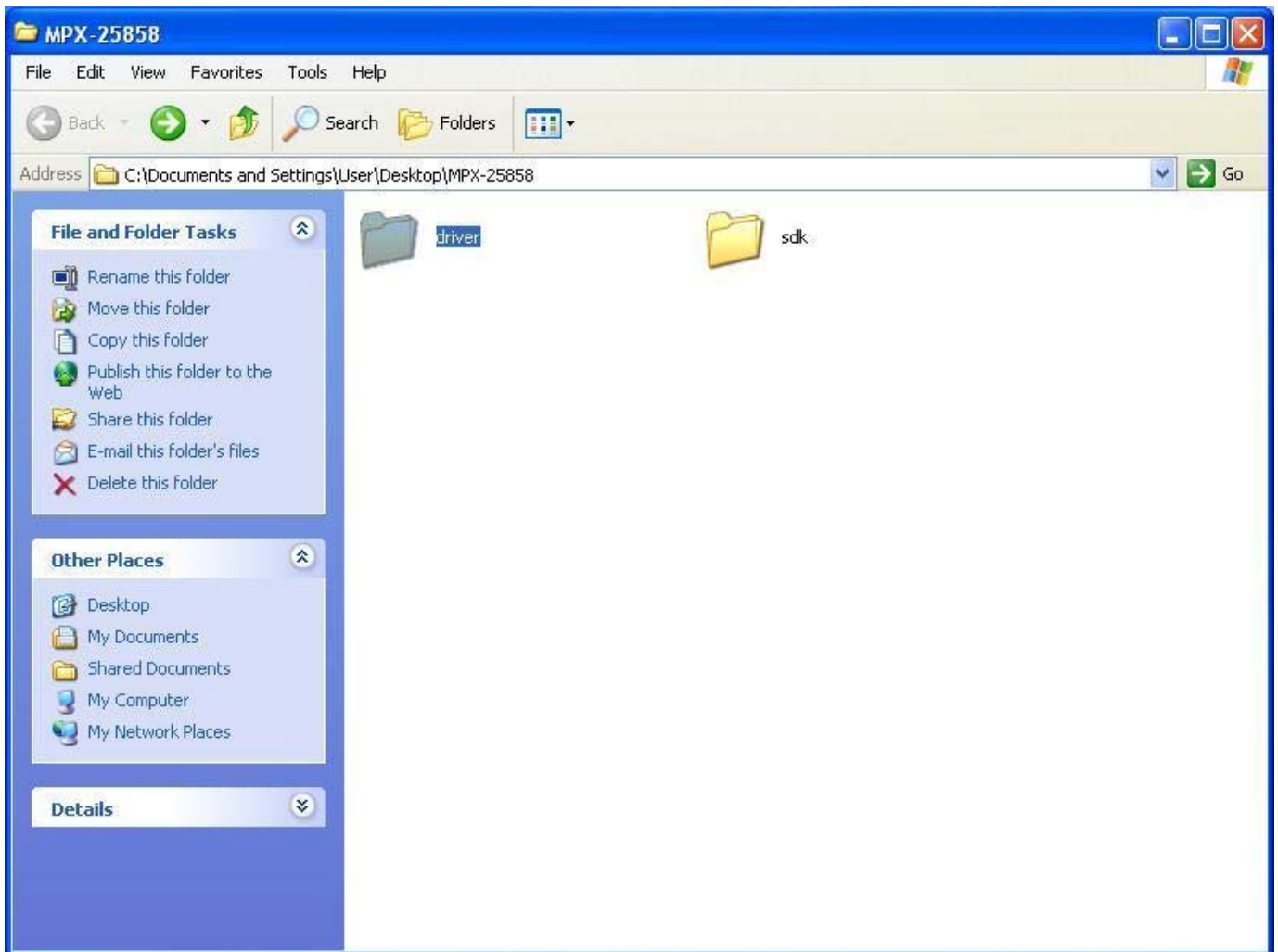
Pin	Description
1	Video1
2	Video2
3	Video3
4	Video4
5	GND
6	Video5
7	Video6
8	Video7
9	Video8
10	GND
11	Audio1
12	Audio2
13	Audio3
14	Audio4
15	GND
16	Audio5
17	Audio6
18	Audio7
19	Audio8
20	GND

1.4 <Driver Setting>

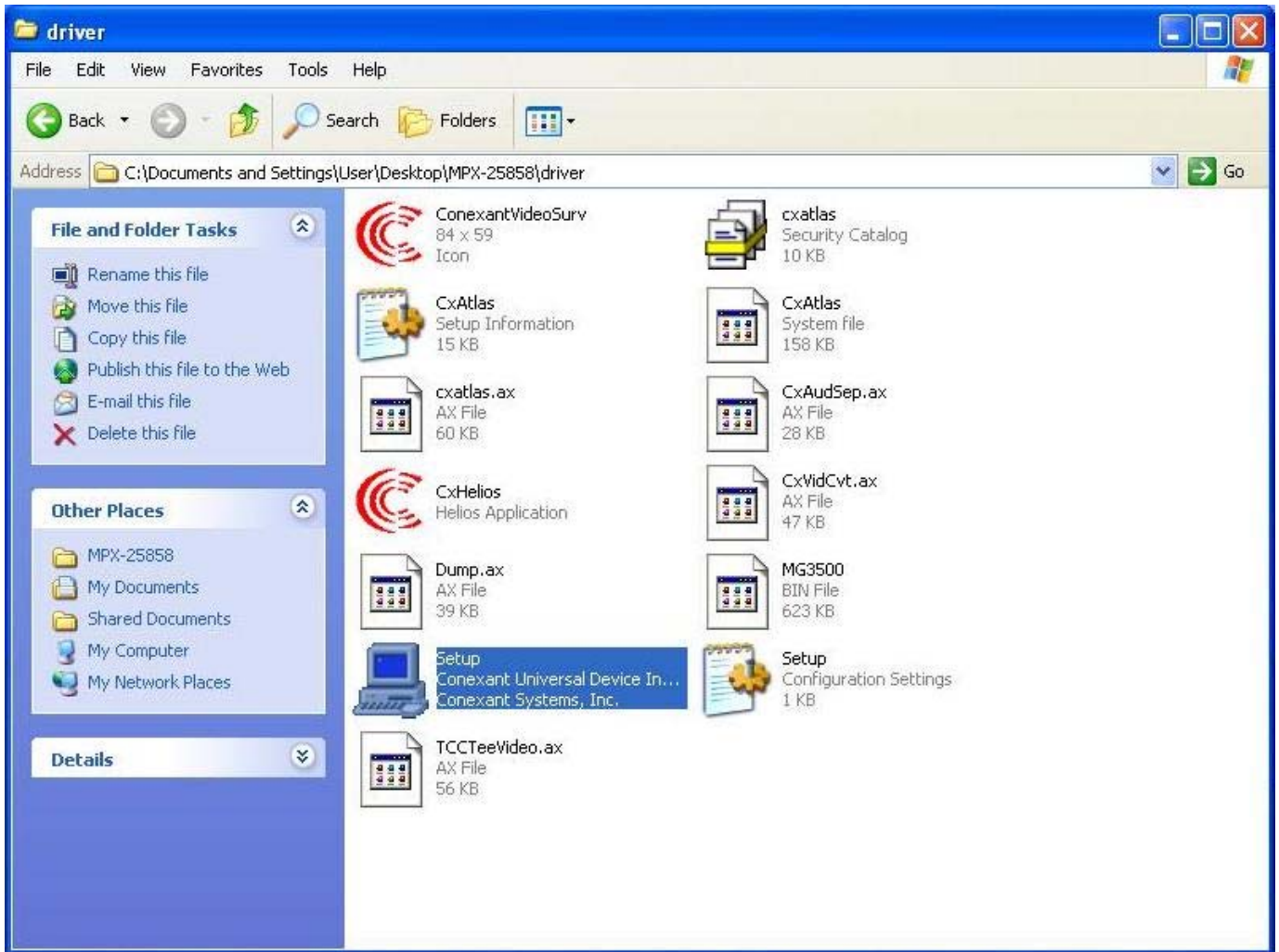
1. Copy the CD Driver folder to disk, Ex: C:\ , D:\ ...

2. Please select file location

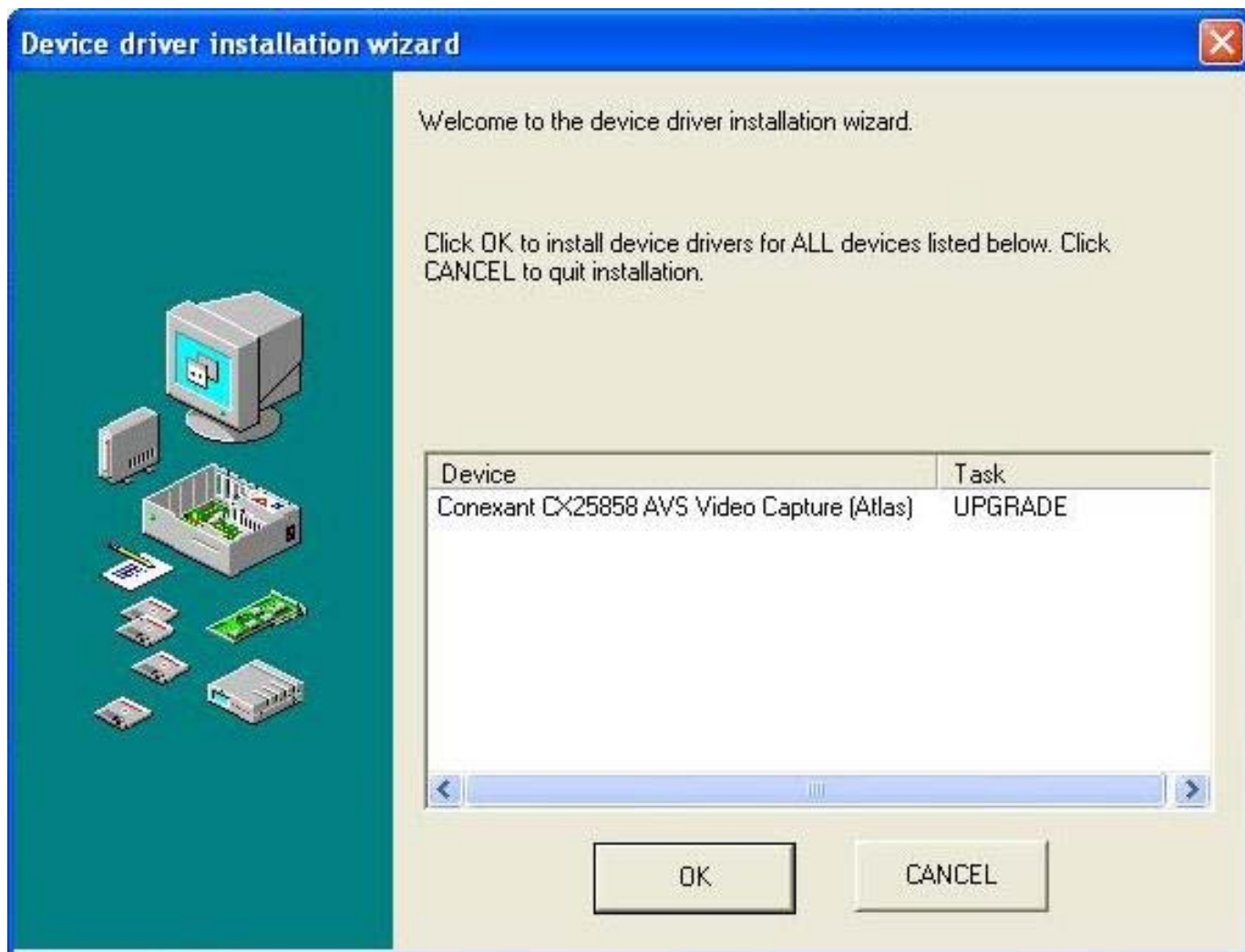
C:\MPX-25858\driver



3. Please choose **Setup**



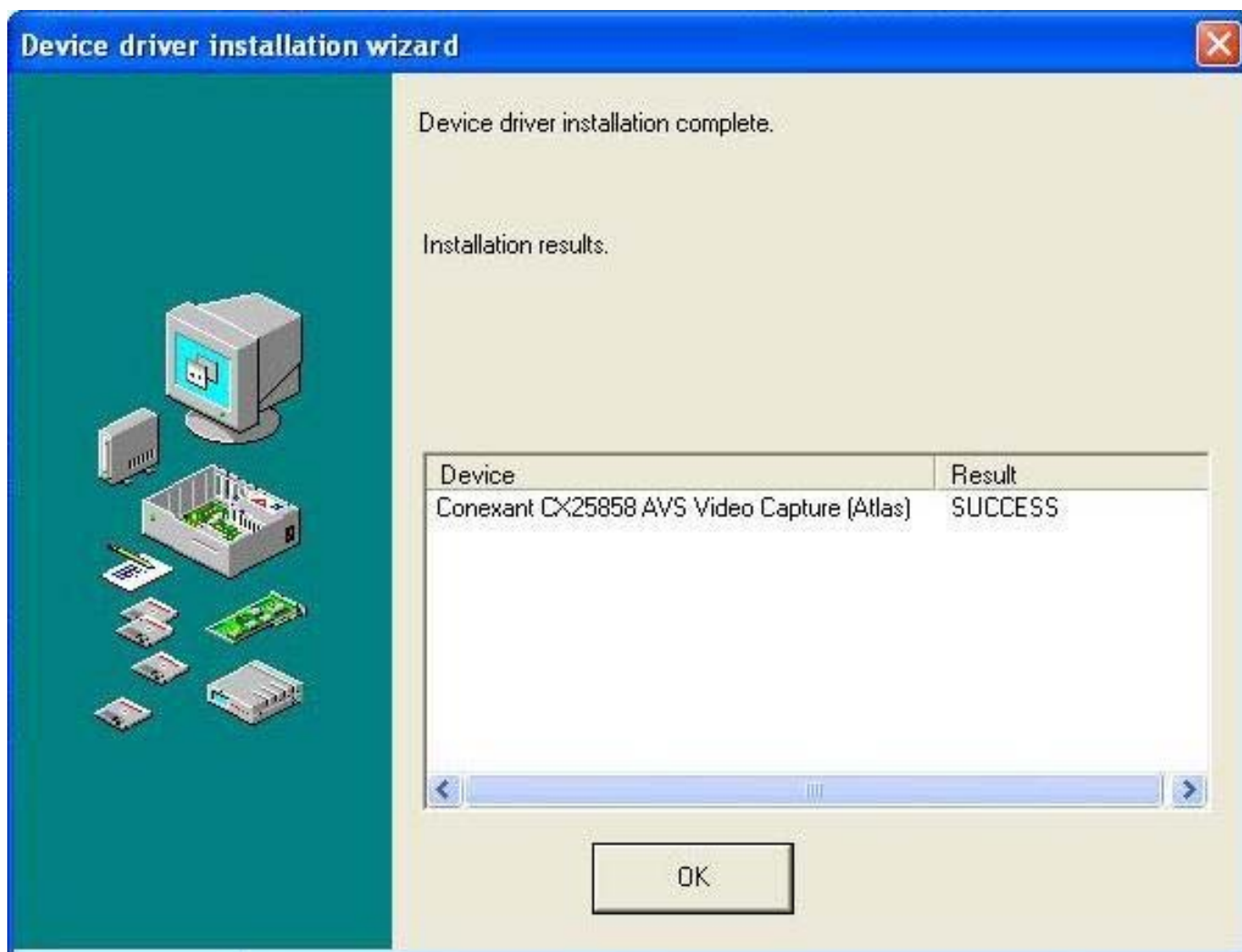
4. Please click "OK"



5. Please click “**Continue Anyway**”, when you see the following message two times.



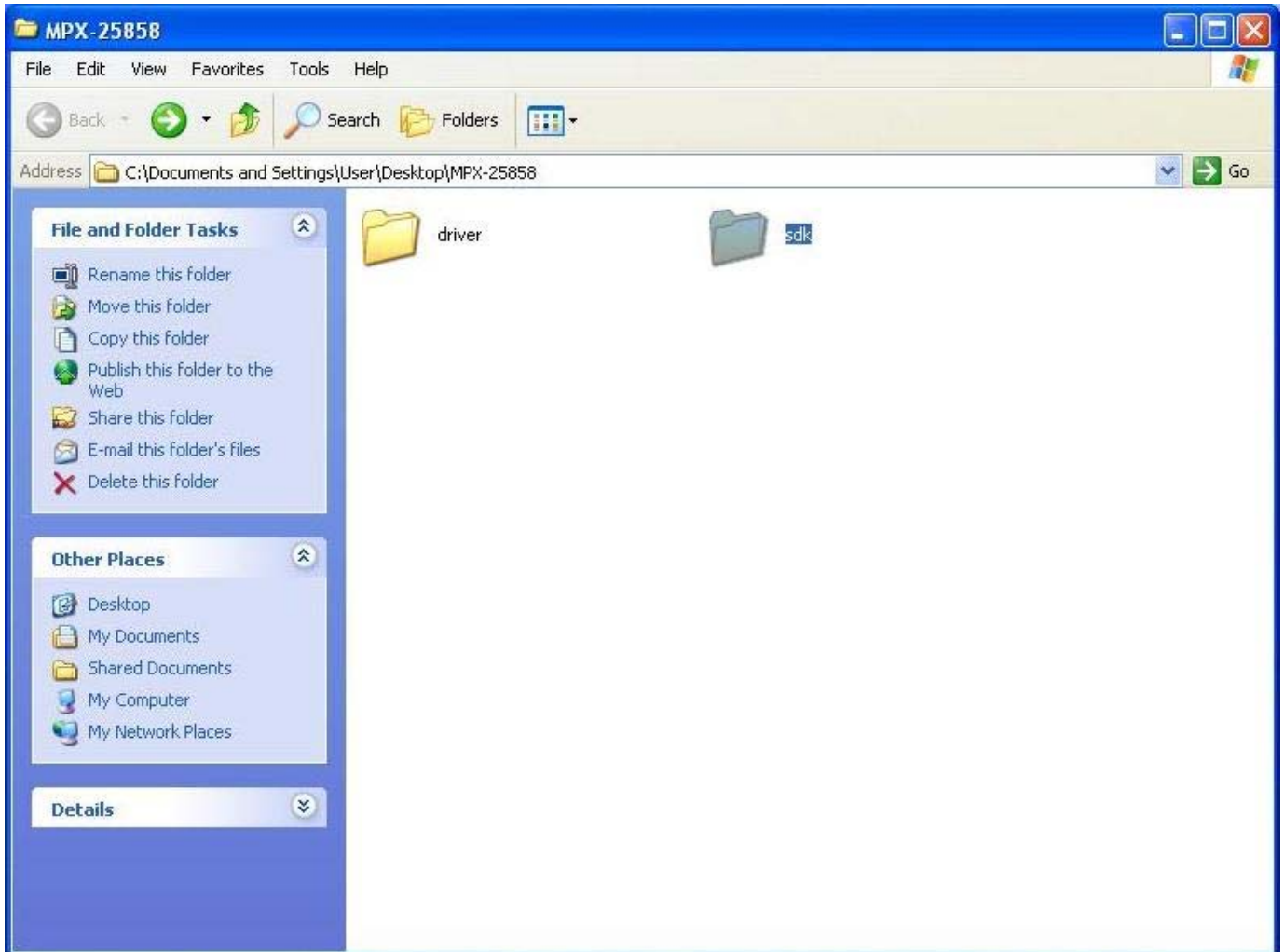
6. Please click “OK” to complete the installation.



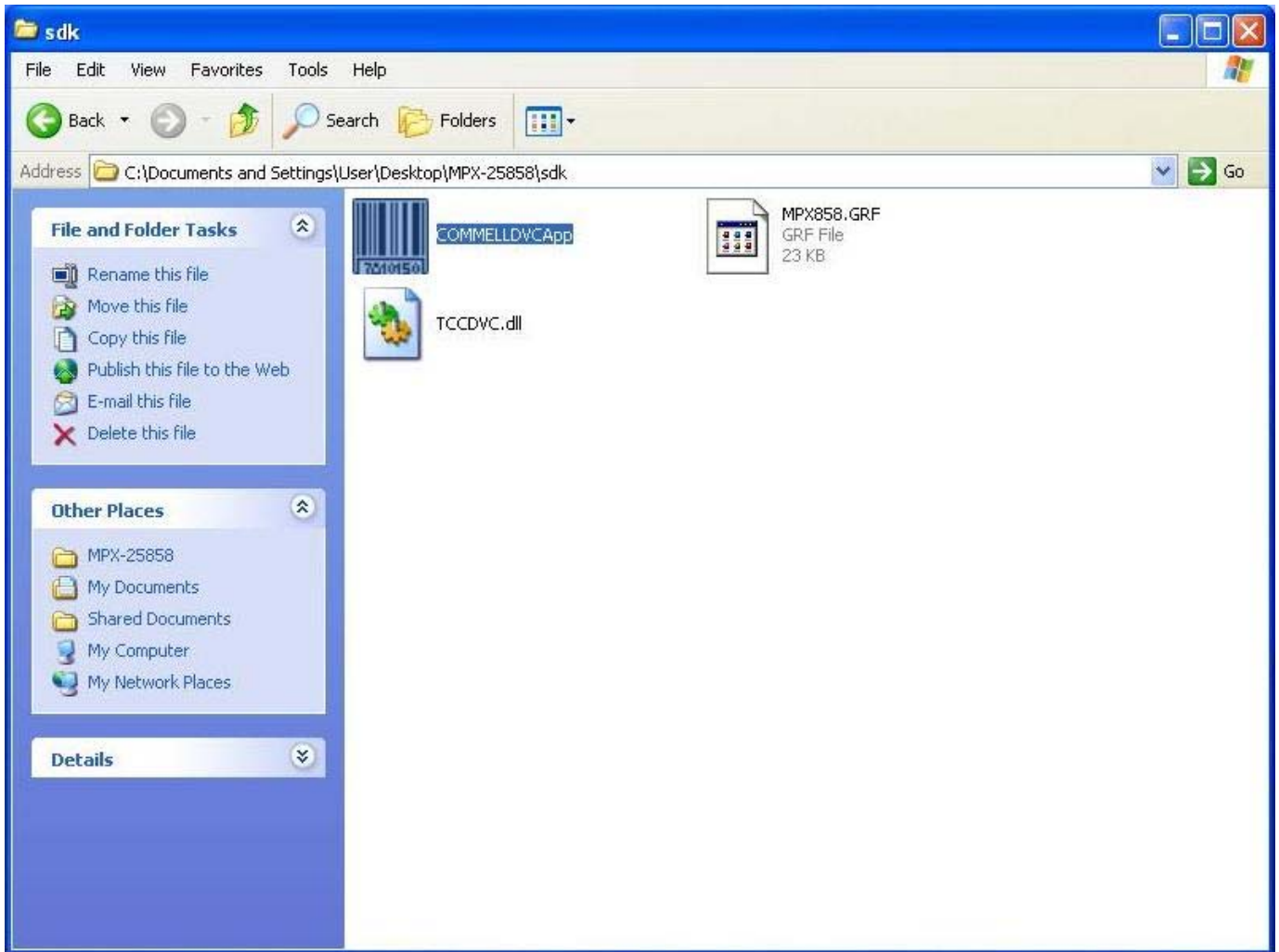
1.5 <Sample Program>

1. After driver install, please choose SDK.

C:\MPX-25858\sdk



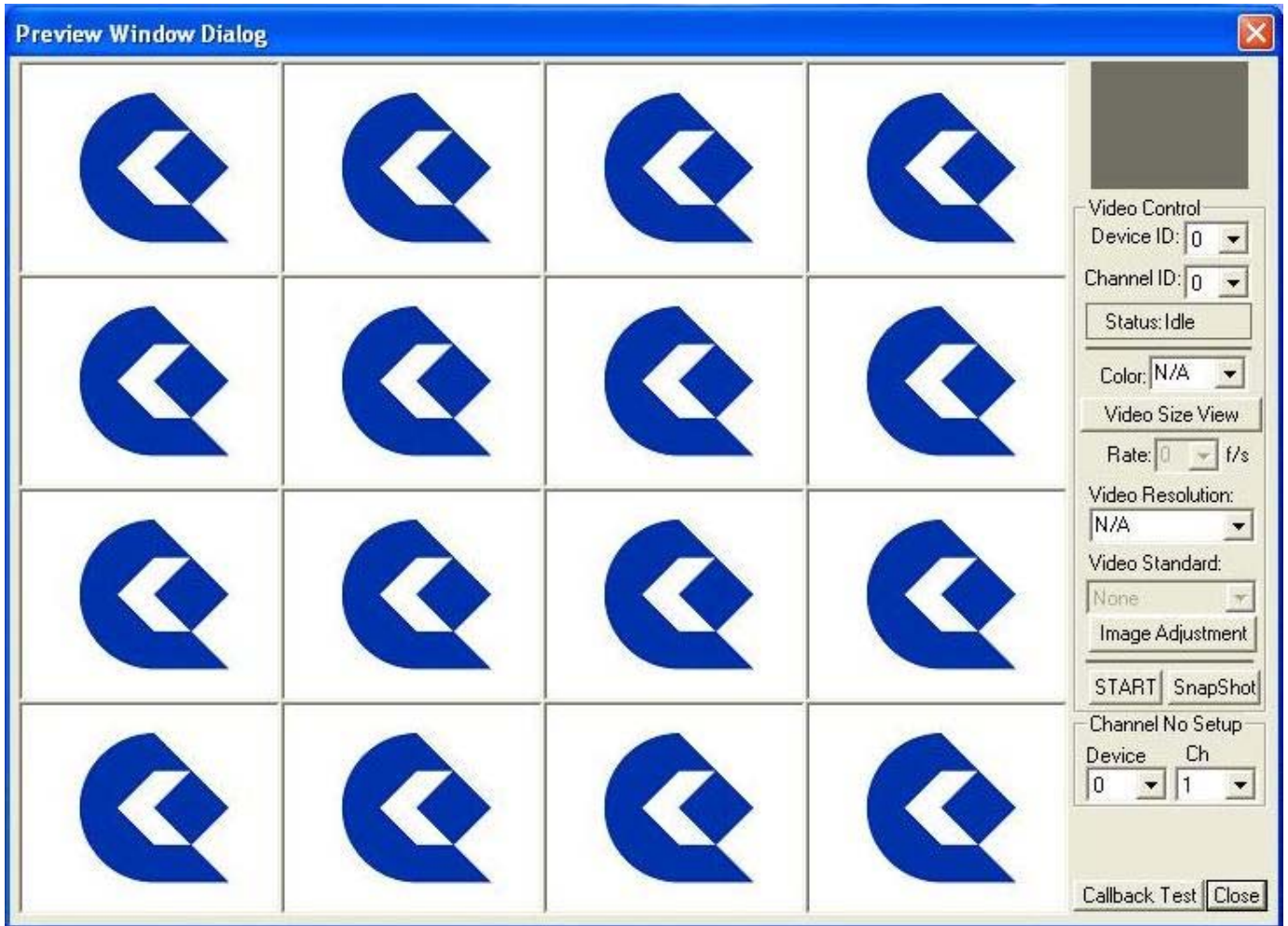
2. Please choose “**COMMELLDVCAApp**”.



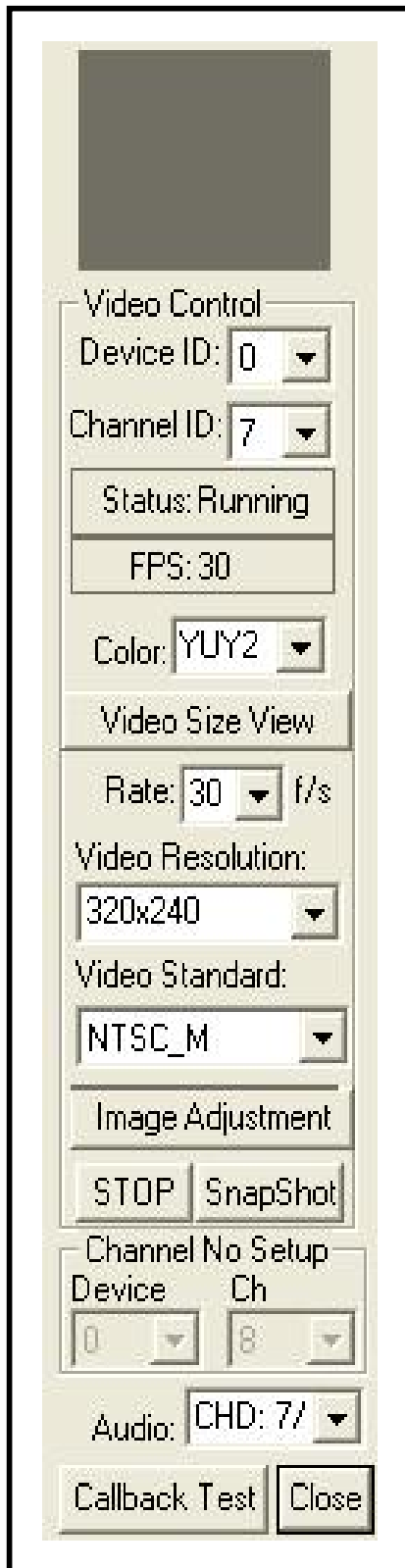
3. Please choose “**Preview**”.



4. When you click “**START**”, you can watch the video.



Explanation of Sample program function



Device ID:

It is mean CX23885 Chipset.

Channel ID:

Support Video input per device.

FPS:

It is mean real times FPS on working channel.

Snapshot:

Catch the image on working channel.

Audio:

The Audio output Channel

Callback Test:

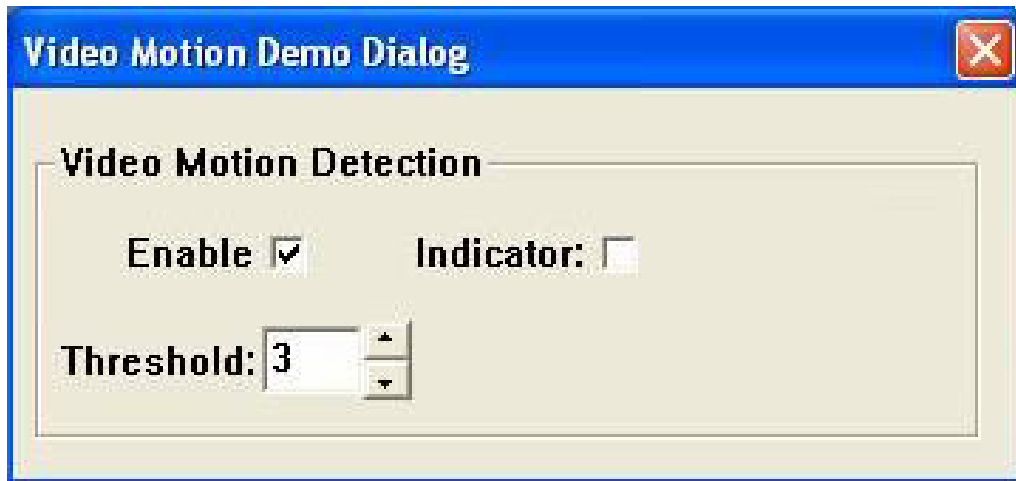
Catch the series image on working channel

Note:

Every channel works separately, when you want to change any setting, please stop all channels which are working.

1.6 <Video Motion>

Please choose “Video Motion”, then you can see program interface as following.



Enable:

If user “check” this box, it will enable video motion detection.

Indicator:

If this box is checked, it will show red spots as a motion indication, when the video motion is been detected.

Threshold:

Select motion detection sensitivity level. The smaller number makes it more sensitive.

Contact Information

Any advice or comment about our products and service, or anything we can help you please don't hesitate to contact with us. We will do our best to support you for your products, projects and business.

Taiwan Commate Computer Inc.

Address	19F., .94, Sec. 1, Xintai 5th Rd., Xizhi Dist., New Taipei City 22102, Taiwan (R.O.C.)
TEL	+886-2-26963909
FAX	+886-2-26963911
Website	http://www.commell.com.tw
E-Mail	info@commell.com.tw (General Information) tech@commell.com.tw (Technical Support)

Commell is the trademark of Taiwan Commate Computer INC.