

A photograph of an industrial building with several tall, silver chimneys against a clear blue sky. The building has a metallic, corrugated facade. A blue banner is overlaid on the bottom left of the image.

Industrial PC Systems

INDUSTRIAL PC SYSTEMS

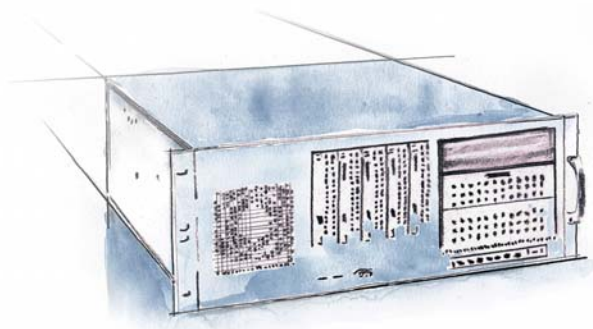
VERSION 2018|1.4

SPECTRA-RACK SERIES

SPECTRA-SECURACK SERIES

SPECTRA-KOMPAKT SERIES

SPECTRA-TOWER SERIES



 **spectra**
Industrie-PC & Automation

THE COMPANY

Spectra GmbH & Co. KG was established in 1982 and has grown to become a leading supplier of products directly and indirectly related to industrial computer applications in Germany. Spectra's activities included trading in components for measurement and automation technology and the development and

production of industrial PC systems. Customers for industrial high-tech products attach especially high importance to good service. For Spectra as a supplier of high quality products, competent and personal customer support in both pre- and post-sales is of key importance.

A strong team: competent and personal customer support in both pre- and post-sales





MODERN PRODUCTION – HIGH-QUALITY PRODUCTS IN SERIES

Our careful selection of components combined with numerous and extensive tests guarantee the quality of our products, their reliability and your security! No company can afford downtimes nor should it have to.

We therefore test all our systems, which leave our premises, in a practice-based 24-hour burn-in test so that can be rest assured that the product that has been individually matched with your requirements will reliably withstand even the toughest demands.

SERVICE AND SUPPORT

In addition to the warranty and quality assurance, we offer our customers not only expert individual advice, but also competent

support during commissioning and if any problems arise in service. Our repair department provides rapid, reliable and uncomplicated assistance – also on our customers' premises.

MANY GOOD REASONS FOR SPECTRA PCS:

- Competent advice and needs analysis
- Well-thought-out system from an experienced manufacturer
- Various form factors & equipment
- Cost-effective
- Fast delivery times
- 24 h Burn-in test
- 24 months warranty

1 HE SPECTRA-RACK

CHASSIS FEATURES

- 19" 1U rackmount, sheet steel
- Support for max. 2 add-on cards (over riser card)
- Drive bays: 1 x 5.25" drive with front access, 1 x 3.5" internal drive
- 3 x 40 mm fans in the chassis' centre
- Front panel: 1 x power, 1 x reset, 2 x USB2.0
- Front panel LEDs: power, HDD
- Colour: black
- Dimensions (WHD): 482 x 44 x 450 mm
- Weight: approx. 13 kg



DETAILS



1 HE SPECTRA-RACK

MODEL	SPECTRA-RACK 1H18 H81 10B	SPECTRA-RACK 1H125 Q87 10B
ARTICLE N°	146541	145764

SYSTEM

CPU Socket	LGA1150 for Intel® Core™ i7/i5/i3 / Pentium® / Celeron® CPUs (Haswell)	
Processor	Intel® Core™ i3-4330 3.5 GHz, Dual-Core, 54 W TDP	
Chipset	Intel® H81	Intel® Q87
Memory	2 x 240-Pin DIMM, max. 16 GB installed: 2 x 4 GB DDR4	4 x 240-Pin DIMM, max. 32 GB installed: 2 x 4 GB DDR3
HW monitoring	Watchdog with 256 levels	

CONTROLLERS

Graphics	Intel® HD Graphics 4600 350-1.150 MHz, 2.048 MB VRAM, DirectX12, OpenGL4.0, OpenCL1.2 support 2 independent displays 1.920 x 1.200 (VGA)	
Resolution (max:)		
Network	1 x Intel® i217LM Gigabit-LAN 1 x Intel® i211AT Gigabit-LAN (Jumbo Frames support)	1 x Intel® i217LM Gigabit-LAN 1 x Intel® i210AT Gigabit-LAN (Jumbo Frames support)
Audio	Upon request	

EXPANSIONS

PCI-Express	1 x mPCIe (mSATA compatible)	1 x PCIe(x16)2.0 1 x mPCIe (mSATA compatible)
PCI	2 x 32-bit PCI (5V)	-

DRIVES

Drive bays	2 x SATA-6G, 1 x SATA-II	6 x SATA-6G, RAID 0/1/5/10 support
Drives	1 x 1 TB 2.5" SATA-6G 24h/7d	
Other	1 x DVD/RW	

I/O INTERFACES

Rear	1 x VGA, 2 x RJ45, 2 x USB2.0	1 x VGA, 2 x RJ45, 2 x USB3.0
Front	2 x USB2.0	
Internal (not activated)	2 x USB3.0, 4 x USB2.0, 3 x COM, 1 x LPT, 1 x PS/2	2 x USB3.0, 2 x USB2.0, 5 x COM, 1 x LPT, 1 x PS/2

MECHANICAL & ENVIRONMENT CONDITIONS

Power supply	180 W, ATX Input: 90 ~ 264 VAC Full Range Output (max.): 14A@5V, 10A@12V, 0,3A@-12V, 10A@3,3V, 2,5A@5VSB MTBF: >100.000 h@25° C	250 W, ATX Input: 90 ~ 264 VAC Full Range Output (max.): 16A@5V, 16A@12V1, 16A@12V2, 0,5A@-12V, 14A@3,3V, 0,3A@-5V, 3A@5VSB MTBF: >100.000 h@25° C
Temperatures	Operating temperature: 0°C ~ +50°C, Relative humidity: 5% ~ 90%, non-condensing	
Operating system	Microsoft® Windows® 7 Professional, 64-bit	

2 HE SPECTRA-RACK

CHASSIS FEATURES

- 19" 2U rackmount, sheet steel
- Support for max. 2 Add-on cards (over riser card)
- Drives bays: 1 x 3.5" & 1 x 5.25" drives with front access, 3 x 3.5" internal drives
- 3 x 80 mm fans in the chassis' centre
- Front panel: 1 x power, 1 x reset, 2 x USB2.0
- Front panel LEDs: power, HDD
- Colour: black
- Dimensions (WHD): 483 x 88 x 450 mm
- Weight: approx. 16 kg



DETAILS



2 HE SPECTRA-RACK

MODEL	SPECTRA-RACK 2H35 Q77 20B	SPECTRA-RACK 2H35 Q170 20B
ARTICLE N°	145761	146543

SYSTEM

CPU Socket	LGA1155 for Intel® Core™ i7/i5/i3 / Pentium® / Celeron® CPUs (Ivy Bridge)	LGA1151 for Intel® Core™ i7/i5/i3 / Pentium® / Celeron® CPUs (Skylake)
Processor	Intel® Core™ i3-3220 3.3 GHz, Dual-Core, 55 W TDP	Intel® Core™ i3-6100 3.7 GHz, Dual-Core, 51 W TDP
Chipset	Intel® Q77 Express	Intel® Q170 Express
Memory	4 x 240-Pin DIMM, max. 32 GB installed: 2 x 4 GB DDR3	4 x 280-Pin DIMM, max. 64 GB installed: 2 x 4 GB DDR4
HW monitoring	Watchdog with 256 levels	

CONTROLLERS

Graphics	Intel® HD Graphics 2500 650-1.050 MHz, 1.720 MB VRAM, DirectX11.1, OpenGL4.0, OpenCL1.2 support 3 independent displays 1.920 x 1.200 (DP, DVI), 2.048 x 1.536 (VGA)	Intel® HD Graphics 530 350-1.050 MHz, 1.700 MB VRAM, DirectX12, OpenGL4.4, OpenCL2.0 support 3 independent displays 4.096 x 2.304 (DP) 1.920 x 1.200 (DVI) 2.048 x 1.536 (VGA)
Resolution (max.)		
Network	1 x Intel® 82579LM (vPro) Gigabit-LAN 1 x Intel® 82583V Gigabit-LAN (Jumbo Frames support)	1 x Intel® i219LM (vPro) Gigabit-LAN 1 x Intel® i210AT Gigabit-LAN (Jumbo Frames support)
Audio	Realtek ALC887 HD Audio	

EXPANSIONS

PCI-Express	2 x PCIe(x4)2.0 1 x mPCIe (mSATA compatible)	2 x PCIe(x4)3.0 2 x mPCIe (1 mSATA compatible)
PCI	-	

DRIVES

Drive bays	2 x SATA-6G, 3 x SATA-II, RAID 0/1/5/10 support	5 x SATA-6G, RAID 0/1/5/10 support
Drives	1 x 1 TB 2.5" SATA-6G 24h/7d, Enterprise	1 x 1 TB 2.5" SATA-6G 24h/7d
Other	1 x DVD/RW	

I/O INTERFACES

Rear	1 x DP, 1 x DVI-D, 1 x VGA, 2 x RJ45, 1 x COM, 4 x USB3.0, 2 x USB2.0, 3 x Audio, 1 x PS/2	2 x DP, 1 x DVI-D, 1 x VGA, 2 x RJ45, 2 x USB3.0, 6 x USB2.0, 3 x Audio, 1 x PS/2
Front	2 x USB2.0	
Internal (not activated)	4 x USB2.0, 5 x COM, 1 x LPT	2 x USB3.0, 2 x USB2.0, 6 x COM, 1 x LPT

MECHANICAL & ENVIRONMENT CONDITIONS

Power supply	350 W, ATX, 80plus Input: 90 ~ 264 VAC Full Range Output (max.): 12A@5V, 24A@12V, 0.3A@-12V, 14A@3.3V, 3A@5VSB MTBF: >100.000 h@25° C	
Temperatures	Operating temperature: 0°C ~ +50°C, Relative humidity: 5% ~ 90%, non-condensing	
Operating system	Microsoft® Windows® 7 Professional, 64-bit	Microsoft® Windows® 10 Professional, 64-bit

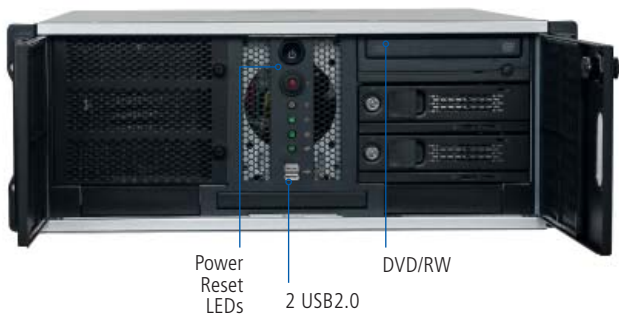
4 HE SPECTRA-RACK

CHASSIS FEATURES

- 19" 4U rackmount, sheet steel
- Support for max. 7 Add-on cards
- Drive bays mounted on rubber buffers:
1 x 3.5" & 3 x 5.25" drives with front access, 3 x 3.5" internal drives
- 1 x 120 mm fan on the front
(optional 2 x 80 mm fans in the back)
- Front panel: 1 x power, 1 x reset, 2 x USB2.0
- Front panel LEDs: power, HDD, fan, temperature
- Colour: black
- Dimensions (WHD): 482 x 177 x 445 mm
- Weight: approx. 23 kg



DETAILS



4 HE SPECTRA-RACK

MODEL	SPECTRA-RACK 4H50 C236 30B	SPECTRA-RACK 4H50 H110 30B	SPECTRA-RACK 4H50 H110 10B
ARTICLE N°	146536	146527	146547

SYSTEM

CPU Socket	LGA1151 for Intel® Xeon® E3-1200v5 / Core™ i7/i5/i3 / Pentium® / Celeron® CPUs (Skylake)		
Processor	Intel® Core™ i7-6700 3.4 GHz, Quad-Core, 65 W TDP	Intel® Core™ i3-6100 3.7 GHz, Dual-Core, 51 W TDP	Intel® Pentium® G4400 3.3 GHz, Dual-Core, 54 W TDP
Chipset	Intel® C236 Express	Intel® H110 Express	
Memory	4 x 280-Pin DIMM, max. 64 GB installed: 2 x 4 GB DDR4	2 x 280-Pin DIMM, max. 32 GB installed: 2 x 4 GB DDR4	2 x 280-Pin DIMM, max. 64 GB installed: 1 x 4 GB DDR4
HW monitoring	Watchdog with 256 levels		

CONTROLLERS

Graphics	Intel® HD Graphics 530, 350-1.050 MHz, 1.700 MB VRAM, DirectX12, OpenGL4.4, OpenCL2.0 3 independent displays 4.096 x 2.304 (DP) 1.920 x 1.200 (DVI)		Intel® HD Graphics 510, 350-1.000 MHz, max 64 GB VRAM, DirectX12, OpenGL4.4, OpenCL2.0 2 independent displays 3.840 x 2.160 (HDMI) 1.920 x 1.200 (DVI)
Display Support Resolution (max:)			
Network	1 x Intel® i219LM (vPro) Gigabit-LAN 1 x Intel® i210AT Gigabit-LAN (Jumbo Frames support)		1 x Intel® i219LM (vPro) GB-LAN 1 x Intel® i211AT Gigabit-LAN (Jumbo Frames support)
Audio	Realtek ALC887 HD Audio	Realtek ALC671 HD Audio	Realtek ALC662 HD Audio

EXPANSIONS

PCI-Express	1 x PCIe(x16)3.0 2 x PCIe(x4)3.0 2 x PCIe(x1)3.0 1 x mPCIe (mSATA compatible)	1 x PCIe(x16)3.0 4 x PCIe(x1)2.0	1 x PCIe(x16)3.0 1 x mPCIe (mSATA compatible)
PCI	2 x 32-bit PCI (5V)	2 x 32-bit PCI 2.3 (5V)	6 x 32-bit PCI 2.2 (5V)

DRIVES

Drive bays	6 x SATA-6G, RAID 0/1/5/10 support	4 x SATA-6G	
Drives	1 x TB 3.5" SATA-6G 24h/7d, Enterprise		
Other	1 x DVD/RW		

I/O INTERFACES

Rear	2 x DP, 1 x DVI-D, 2 x RJ45, 1 x COM, 4 x USB3.0, 4 x USB2.0, 3 x Audio, 2 x PS/2	1 x DP, 1 x DVI-D, 2 x RJ45, 2 x USB3.0, 4 x USB2.0, 3 x Audio, 2 x PS/2	1 x HDMI, 1 x DVI-D, 2 x RJ45, 2 x COM, 4 x USB3.0, 2 x USB2.0, 3 x Audio, 1 x PS/2
Front	2 x USB2.0		2 x USB2.0
Internal (not activated)	2 x USB3.0, 2 x USB2.0, 1 x COM, 1 x LPT	1 x COM, 1 x LPT	3 x COM, 1 x LPT

MECHANICAL & ENVIRONMENT CONDITIONS

Power supply	500 W, ATX, 80plus Platinum Input: 90 - 264 VAC Full Range Output (max.): 20A@5V, 18A@12V, 0.5A@-12V, 24A@3.3V, 3A@5VSB For 24/7 continuous operation @ 40°C		
Temperatures	Operating temperature: 0°C ~ +50°C, Relative humidity: 5% ~ 90%, non-condensing		
Operating system	Microsoft® Windows® 10 Professional, 64-bit	Microsoft® Windows® 7 Pro., 32-bit	

4 HE SPECTRA-RACK

MODEL	SPECTRA-RACK 4H50 H110 50B	SPECTRA-RACK 4H50 Q170 20B
ARTICLE N°	145770	145755

SYSTEM

CPU Socket	LGA1151 for Intel® Core™ i7/i5/i3 / Pentium® / Celeron® CPUs (Skylake)	
Processor	Intel® Core™ i3-6100 3.7 GHz, Dual-Core, 51 W TDP	Intel® Core™ i3-6100 3.7 GHz, Dual-Core, 51 W TDP
Chipset	Intel® H110	Intel® Q170 Express
Memory	2 x 280-Pin DIMM, max. 16 GB installed: 2 x 4 GB DDR4	4 x 280-Pin DIMM, max. 64 GB installed: 2 x 4 GB DDR4
HW monitoring	Watchdog with 256 levels	

CONTROLLERS

Graphics Display Support Resolution (max:)	Intel® HD Graphics 530, 350-1.050 MHz, 1.700 MB VRAM, DirectX12, OpenGL4.4, OpenCL2.0 2 independent displays 3.840 x 2.160 (HDMI) 1.920 x 1.200 (DVI/VGA)	Intel® HD Graphics 530 350-1.050 MHz, 1.700 MB VRAM, DirectX12, OpenGL4.4, OpenCL2.0 support 3 independent displays 4.096 x 2.304 (DP) 1.920 x 1.200 (DVI) 2.048 x 1.536 (VGA)
Network	1 x Intel® i219V Gigabit-LAN 1 x Intel® i211AT Gigabit-LAN (Jumbo Frames support)	1 x Intel® i219LM (vPro) GB-LAN 1 x Intel® i210AT Gigabit-LAN (Jumbo Frames support)
Audio	Realtek ALC662 HD Audio	Realtek ALC887 HD Audio

EXPANSIONS

PCI-Express	1 x PCIe(x16)3.0 1 x PCIe(x4)3.0 1 x PCIe(x1)2.0	1 x PCIe(x16)3.0 2 x PCIe(x4)3.0 2 x mPCIe (1 mSATA compatible)
PCI	4 x 32-bit PCI 2.2 (5V)	4 x 32-bit PCI (5V)

DRIVES

Drive bays	4 x SATA-6G	5 x SATA-6G, RAID 0/1/5/10 support
Drives	1 x 1 TB 3.5" SATA-6G 24h/7d, Enterprise	
Other	1 x DVD/RW	

I/O INTERFACES

Rear	1 x HDMI, 1 x DVI-D, 1 x VGA, 2 x RJ45, 1 x COM, 4 x USB3.0, 2 x USB2.0, 2 x Audio, 1 x PS/2	2 x DP, 1 x DVI-D, 1 x VGA, 2 x RJ45, 2 x USB3.0, 6 x USB2.0, 3 x Audio, 1 x PS/2
Front	2 x USB3.0	2 x USB2.0
Internal (not activated)	3 x USB2.0, 5 x COM	2 x USB3.0, 2 x USB2.0, 6 x COM, 1 x LPT

MECHANICAL & ENVIRONMENT CONDITIONS

Power supply	500 W, ATX, 80plus Platinum Input: 90 - 264 VAC Full Range Output (max.): 20A@5V, 18A@12V, 0.5A@-12V, 24A@3.3V, 3A@5VSB For 24/7 continuous operation @ 40°C	
Temperatures	Operating temperature: 0°C ~ +50°C, Relative humidity: 5% ~ 90%, non-condensing	
Operating system	Microsoft® Windows® 10 Professional, 64-bit	Microsoft® Windows® 10 Pro., 64-bit

4 HE SPECTRA-RACK

MODEL	SPECTRA-RACK 4H50 Q77 20B	SPECTRA-RACK 4H50 Q87 20B	SPECTRA-RACK 4H50 Q87 31B
ARTICLE N°	146537	145757	145756

SYSTEM

CPU Socket	LGA1155 for Intel® Core™ i7/i5/i3 / Pentium® / Celeron® CPUs (Ivy Bridge)	LGA1150 for Intel® Core™ i7/i5/i3 / Pentium® / Celeron® CPUs (Haswell)
Processor	Intel® Core™ i3-3220 3.3 GHz, Dual-Core, 55 W TPD	Intel® Core™ i3-4330 3.5 GHz, Dual-Core, 54 W TDP
Chipset	Intel® Q77 Express	Intel® Q87 Express
Memory	4 x 240-Pin DIMM, max. 32 GB installed: 2 x 4 GB DDR3	
HW monitoring	Watchdog with 256 levels	

CONTROLLERS

Graphics	Intel® HD Graphics 2500, 650-1050 MHz, 1720 MB VRAM, DirectX11.1, OpenGL4.0, OpenCL1.2 support 3 independent displays 1.920 x 1.200 (DP, DVI) 2.048 x 1.536 (VGA)	Intel® HD Graphics 4600, 350-1150 MHz, 2048 MB VRAM, DirectX12, OpenGL4.0, OpenCL1.2 support 3 independent displays 1.920 x 1.200 (DP, DVI)
Resolution (max:)		
Network	1 x Intel® 82579LM GLAN 1 x Intel® 82583V GLAN (Jumbo Frames support)	1 x Intel® i217LM (vPro) Gigabit-LAN 1 x Intel® i210AT Gigabit-LAN (Jumbo Frames support)
Audio	Realtek ALC887 HD Audio	
		Realtek ALC671 HD Audio

EXPANSIONS

PCI-Express	1 x PCIe(x16)2.0 1 x PCIe(x4)2.0 1 x mPCIe (mSATA compatible)	1 x PCIe(x16)3.0 3 x PCIe(x1)2.0 2 x mPCIe (1 mSATA compatible)	1 x PCIe(x16)3.0 1 x PCIe(x4)2.0 1 x PCIe(x1)1.0 1 x mPCIe (mSATA compatible)
PCI	5 x 32-bit PCI (5V)	3 x 32-bit PCI (5V)	4 x 32-bit PCI (5V)

DRIVES

Drive bays	2 x SATA-6G, 3 x SATA-II, RAID 0/1/5/10 support	6 x SATA-6G, RAID 0/1/5/10 support
Drives	1 x 1 TB 3.5" SATA-6G, 24h/7d, Enterprise	
Other	1 x DVD/RW	

I/O INTERFACES

Rear	1 x DP, 1 x DVI-D, 1 x VGA, 2 x RJ45, 1 x COM, 4 x USB3.0, 2 x USB2.0, 3 x Audio, 1 x PS/2	1 x DP, 1 x DVI-I, 2 x RJ45, 2 x COM, 4 x USB3.0, 2 x USB2.0, 3 x Audio, 1 x PS/2	2 x DP, 1 x DVI-I, 2 x RJ45, 1 x COM, 2 x USB3.0, 6 x USB2.0, 3 x Audio, 2 x PS/2
Front	2 x USB2.0		
Internal (not activated)	4 x USB2.0, 5 x COM, 1 x LPT	4 x USB2.0, 4 x COM, 1 x LPT	2 x USB3.0, 2 x USB2.0, 1 x COM, 1 x LPT

MECHANICAL & ENVIRONMENT CONDITIONS

Power supply	500 W, ATX, 80plus Platinum Input: 90 - 264 VAC Full Range Output (max.): 20A@5V, 18A@12V, 0.5A@-12V, 24A@3.3V, 3A@5VSB For 24/7 continuous operation @ 40°C
Temperatures	Operating temperature: 0°C ~ +50°C, Relative humidity: 5% ~ 90%, non-condensing
Operating system	Microsoft® Windows® 7 Professional, 64-bit

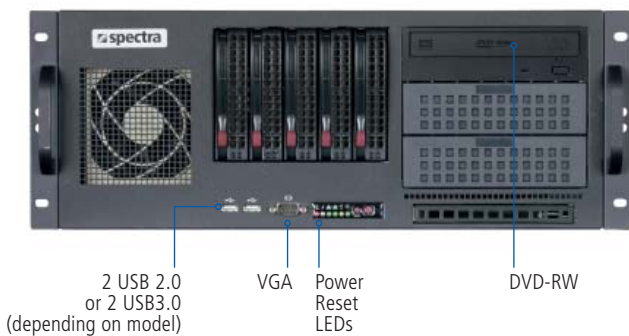
SPECTRA-SECURACK

CHASSIS FEATURES

- 19" 4U High-End Server rackmount, sheet steel
- Support for max. 7 Add-on cards
- 5 x 3.5" hot-swap SAS/SATA drive bays
- Drives bays: 3 x standard 5.25" drives with front access
- 1 x 80 mm fan on the front, 2 x 80 mm fans in the back
- Front panel: 1 x power, 1 x reset, 2 x USB2.0
- Front panel LEDs: power, HDD, LAN, temperature
- Colour: black
- Dimensions (WHD): 482 x 178 x 521 mm
- Weight: approx. 25 kg



DETAILS



SPECTRA-SECURACK

MODEL	SPECTRA-SECURACK 4H85 C612 40B	SPECTRA-SECURACK 4H85 C612 30B
ARTICLE N°	146540	145759

SYSTEM

CPU Socket	LGA2011-R3 for Intel® Xeon® E5-2600/1600v3 / Core™ i7 CPUs (Haswell)
Processor	Intel® Xeon® E5-1620v3 3.5 GHz, Quad-Core, 140 W TDP
Chipset	Intel® C612 Express
Memory	8 x 288-Pin DIMM, max. 256 GB installed: 2 x 8 GB DDR4 ECC reg.
HW monitoring	Watchdog with 256 levels

CONTROLLERS

Graphics	AMD Radeon R7-240, 600 MHz, 2.048 MB VRAM, DirectX11.2, OpenGL4.2, OpenCL1.2, PCIe(x16)3.0, 15-35 W TDP, support 2 independent displays 4.096 x 3.112 (HDMI, 4K) 1.920 x 1.200 (DVI) 2.048 x 1.536 (VGA)
Resolution (max.)	
Network	1 x Intel® i217LM (vPro) Gigabit-LAN 1 x Intel® i210AT Gigabit-LAN (Jumbo Frames support)
Audio	Realtek ALC1150 HD Audio
	Realtek ALC671 HD Audio

EXPANSIONS

PCI-Express	4 x PCIe(x16)3.0 in x16/x8/x8/x8-Mode (1 x PCIe(x8) taken optional in x16/x16/na/x8-Mode) 2 x PCIe(x1)2.0	2 x PCIe(x16)3.0 2 x PCIe(x4)3.0 1 x PCIe(x4)2.0 2 x PCIe(x1)2.0
PCI	-	

DRIVES

Drive bays	10 x SATA-6G, RAID 0/1/5/10 support	
Drives	3 x 2 TB 3.5" SATA-6G 24h/7d, Enterprise in RAID-5-configuration with Adaptec RAID	2 x 6 TB 3.5" SATA-6G 24h/7d, Enterprise in RAID-1-configuration with Adaptec RAID
Other	1 x DVD/RW	

I/O INTERFACES

Rear	1 x HDMI, 1 x DVI-D, 1 x VGA, 2 x RJ45, 6 x USB3.0, 6 x Audio, 1 x PS/2	1 x HDMI, 1 x DVI-D, 1 x VGA, 2 x RJ45, 2 x USB3.0, 4 x USB2.0, 3 x Audio, 2 x PS/2
Front	2 x USB2.0	
Internal (not activated)	1 x COM, 1 x LPT	2 x USB3.0, 2 x USB2.0, 1 x COM

MECHANICAL & ENVIRONMENT CONDITIONS

Power supply	865 W, ATX, 80plus Bronze Input: 90 ~ 264 VAC Full Range Output (max.): 30A@5V, 70A@12V, 1A@-12V, 30A@3.3V, 6.5A@5VSB MTBF: >100.000 h@25° C
Temperatures	Operating temperature: 0°C ~ +35°C, Relative humidity: 5% ~ 90%, non-condensing
Operating system	Microsoft® Windows® 7 Ultimate, 64-bit

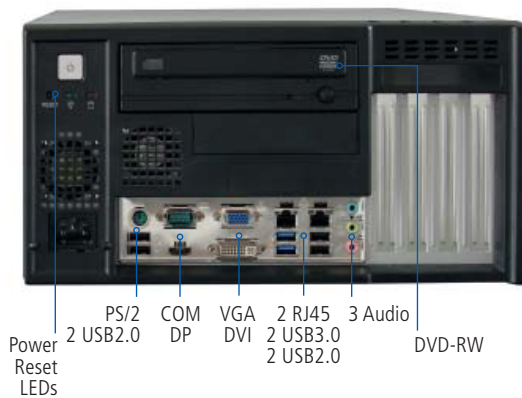
SPECTRA-KOMPAKT

CHASSIS FEATURES

- Rugged Box PC, steel sheet
- Support for max. 4 Add-on cards (max. 200 mm)
- Drives bays: 1 x 5.25" & 1 x 3.5" drives with front access, 1 x 3.5" internal drive
- 1 x 40 mm fan on the front, 1 x 120 mm fan in the back
- Front panel: 1 x power, 1 x reset
- Front panel LEDs: power, HDD
- Colour: black
- Dimensions (WHD): 320 x 164 x 316 mm
- Weight: approx. 15 kg



DETAILS



SPECTRA-KOMPAKT

MODEL	SPECTRA-KOMPAKT 6K35 Q170 30B
ARTICLE N°	146542

SYSTEM

CPU Socket	LGA1151 for Intel® Core™ i7/i5/i3 / Pentium® / Celeron® CPUs (Skylake)
Processor	Intel® Core™ i3-6100 3.7 GHz, Dual-Core, 51 W TDP
Chipset	Intel® Q170 Express
Memory	4 x 280-Pin DIMM, max. 64 GB installed: 2 x 4 GB DDR4-RAM
HW monitoring	Watchdog with 256 levels

CONTROLLERS

Graphics	Intel® HD Graphics 530 350-1.050 MHz, 1.700 MB VRAM, DirectX12, OpenGL4.4, OpenCL2.0 support 3 independent displays 4.096 x 2.304 (DP), 1.920 x 1.200 (DVI)
Resolution (max.)	
Network	1 x Intel® i219LM (vPro) Gigabit-LAN 1 x Intel® i210AT Gigabit-LAN (Jumbo Frames support)
Audio	Realtek ALC887 HD Audio

EXPANSIONS

PCI-Express	1 x PCIe(x16)3.0 2 x PCIe(x4)3.0 1 x PCIe(x1)3.0 1 x mPCIe (mSATA compatible)
PCI	-

DRIVES

Drive bays	5 x SATA-6G, RAID 0/1/5/10 support
Drives	1 x 1 TB 2.5" SATA-6G 24h/7d
Other	1 x DVD/RW

I/O INTERFACES

Rear	-
Front	2 x DP, 1 x DVI-D, 2 x RJ45, 1 x COM 4 x USB3.0, 4 x USB2.0, 3 x Audio, 2 x PS/2
Internal (not activated)	2 x USB3.0, 2 x USB2.0, 1 x COM, 1 x LPT

MECHANICAL & ENVIRONMENT CONDITIONS

Power supply	350 W, ATX, 80plus Bronze Input: 90 ~ 264 VAC Full Range Output (max.): 116A@5V, 2x18A@12 V1/2, 0A@-5V, 0.3A@-12V, 16A@3.3V, 3A@5VSB MTBF: >100.000 h@25° C
Temperatures	Operating temperature: 0°C ~ +50°C, Relative humidity: 5% ~ 90%, non-condensing
Operating system	Microsoft® Windows® 10 Professional, 64-bit

SPECTRA-TOWER

CHASSIS FEATURES

- Midi Tower, steel sheet
- Support for max. 7 Add-on cards
- Drives bays: 3 x 5.25" with front access, 4 x 3.5" internal drives
- 1 x 120 mm fan in the back (optional 1 x 80 mm on the front)
- Front panel: 1 x power, 1 x reset, 2 x USB2.0
- Front panel LEDs: power, HDD, fan, temperature
- Colour: black
- Dimensions (WHD): 198 x 425 x 465 mm
- Weight: approx. 21 kg



SPECTRA-TOWER

MODEL	SPECTRA-TOWER 5T50 Q87 31B	SPECTRA-TOWER 5T50 H110 30B	SPECTRA-TOWER 5T50 C236 30B
ARTICLE N°	146539	146538	146544

SYSTEM

CPU Socket	LGA1150 for Intel® Core™ i7/i5/i3 / Pentium® / Celeron® CPUs (Haswell)	LGA1151 for Intel® Core™ i7/i5/i3 / Pentium® / Celeron® CPUs (Skylake)	LGA1151 for Intel® Xeon® E3-1200v5 / Core™ i7/i5/i3 / Pentium® / Celeron® CPUs (Skylake)
Processor	Intel® Core™ i3-4330 3.5 GHz, Dual-Core, 54 W TDP	Intel® Core™ i3-6100 3.7 GHz, Dual-Core, 51 W TDP	Intel® Xeon® E3-1275v5 3.6 GHz, Quad-Core, 80 W TDP
Chipset	Intel® Q87 Express	Intel® H110 Express	Intel® C236 Express
Memory	4 x 240-Pin DIMM, max. 32 GB installed: 2 x 4 GB DDR4	2 x 280-Pin DIMM, max. 32 GB installed: 2 x 4 GB DDR4	4 x 280-Pin DIMM, max. 64 GB installed: 2 x 8 GB DDR4
HW monitoring	Watchdog with 256 levels		

CONTROLLERS

Graphics	Intel® HD Graphics 4600 350-1.150 MHz, 2.048 MB VRAM, DirectX12, OpenGL4.0, OpenCL1.2 support 3 independent displays 1.920 x 1.200 (DP, DVI)	Intel® HD Graphics 530 350-1.050 MHz, 1.700 MB VRAM, DirectX12, OpenGL4.4, OpenCL2.0 support 3 independent displays 4.096 x 2.304 (DP), 1.920 x 1.200 (DVI)	
Resolution (max:)			
Network	1 x Intel® i217LM (vPro) Gigabit-LAN 1 x Intel® i210AT Gigabit-LAN (Jumbo Frames support)	1 x Intel® i219LM (vPro) Gigabit-LAN 1 x Intel® i210AT Gigabit-LAN (Jumbo Frames support)	
Audio	Realtek ALC671 HD Audio		Realtek ALC887 HD Audio

EXPANSIONS

PCI-Express	1 x PCIe(x16)3.0 1 x PCIe(x4)2.0 1 x PCIe(x1)1.0 1 x mPCIe (mSATA compatible)	1 x PCIe(x16)3.0 4 x PCIe(x1)2.0	1 x PCIe(x16)3.0 2 x PCIe(x4)3.0 2 x PCIe(x1)3.0 1 x mPCIe (mSATA compatible)
PCI	4 x 32-bit PCI (5V)	2 x 32-bit PCI (5V)	

DRIVES

Drive bays	6 x SATA-6G, RAID 0/1/5/10 support	4 x SATA-6G	6 x SATA-6G, RAID 0/1/5/10 support
Drives	1 x 1 TB 3.5" SATA-6G 24h/7d, Enterprise		2 x 6 TB 3.5" SATA-6G 24h/7d, Enterprise, in RAID-1 Configuration with Adaptec RAID
Other	1 x DVD-RW		

I/O INTERFACES

Rear	2 x DP, 1 x DVI-I, 2 x RJ45, 1 x COM, 2 x USB3.0, 6 x USB2.0, 3 x Audio, 2 x PS/2	1 x DP, 1 x DVI-D, 2 x RJ45, 2 x USB3.0, 4 x USB2.0, 3 x Audio, 2 x PS/2	2 x DP, 1 x DVI-D, 2 x RJ45, 1 x COM, 4 x USB3.0, 4 x USB2.0, 3 x Audio, 2 x PS/2
Front	2 x USB2.0		
Internal (not activated)	2 x USB3.0, 2 x USB2.0, 1 x COM, 1 x LPT	2 x USB3.0, 1 x COM, 1 x LPT	2 x USB3.0, 2 x USB2.0, 6 x COM, 1 x LPT

MECHANICAL & ENVIRONMENT CONDITIONS

Power supply	500 W, ATX, 80plus Platinum Input: 90 - 264 VAC Full Range Output (max.): 20A@5V, 18A@12V, 0.5A@-12V, 24A@3.3V, 3A@5VSB For 24/7 continuous operation @ 40°C		
Temperatures	Operating temperature: 0°C ~ +50°C, Relative humidity: 5% ~ 90%, non-condensing		
Operating system	Microsoft® Windows® 7 Professional, 64-bit	Microsoft® Windows® 10 Professional, 64-bit	

PC EXPANSION CARDS



Besides mPCI & mPCIe plug-in modules, these also include communication interface cards and data acquisition cards for Automation, such as fieldbus cards.

PC INTERFACE

- PCIe
- PCI
- mPCIe
- mPCI
- ISA

TYPE

- Graphics / capture / compression / USB / firewire
- Ethernet / PoE / GPS / WLAN / Ethernet switch
- Serial & parallel add-on cards
- Data acquisition, I/O, relay- & fieldbus cards

PC EXPANSION CARDS



Graphics



Firewire



USB



PoE

ARTICLE N°	MODEL	PC-INTERFACE	FEATURES
------------	-------	--------------	----------

GRAPHICS

142377	PNY Quadro K620/2GB	PCIe(x16)	Entry-3D, Nvidia, DP/DVI-I/, active 45 W
--------	---------------------	-----------	--

FIREWIRE

105000	EX-6450	PCI	2+1 x 1394a, 400 Mbps
118167	IOI-FWX2-PCIe10-4	PCIe(x1)	4 x 1394a, 400 Mbps, 2-Channel

USB

130535	EX-11094	PCIe(x1)	4 x USB3.0, 1 x PWR
--------	----------	----------	---------------------

LAN

120351	Intel® Gigabit CT	PCIe(x1)	Gigabit-LAN, RJ45, (e)Q3-2008
132614	Intel® I210-T1 Server	PCIe(x1)	Gigabit-LAN, RJ45

POE

131508	EX-6072PoE	PCIe(x1)	Dual-Gigabit-LAN, PoE, 2 x RJ45
--------	------------	----------	---------------------------------



Serial



PROFIBUS



CANBus



Relay

ARTICLE N°	MODEL	PC-INTERFACE	FEATURES
------------	-------	--------------	----------

SERIAL

100895	C168H/PCI	PCI	8 x RS-232 (1x DB62), 16C550
131410	SER5037T	PCI	2 x RS-232 (2x DB9), 16C650

PROFIBUS

128156	CIFX 50E-DP MASTER	PCIe(x1)	PROFIBUS-DP incl. AIFX-DP + Master license
128155	CIFX 50-DP MASTER	PCI	PROFIBUS-DP incl. AIFX-DP + Master license

CANBUS

129060	PISO-CAN100U-D CR	PCI	1 x CANBus, isolated Sub-D9
--------	-------------------	-----	-----------------------------

RELAIS

144377	PCI-P16R16U-CR	PCI	16 isolated DI, 16 Relay
122205	PEX-P16R16i-CR	PCIe(x1)	16 isolated DI, 16 Relay

DIGITAL I/O

121847	PIO-D24U-CR	PCI	Digital I/O, TTL, 24 DI/O
--------	-------------	-----	---------------------------

SEE MORE EXPANSION CARDS ON OUR WEBSITE WWW.SPECTRA.DE/KARTEN

powered by individuality



Spectra GmbH & Co. KG

Mahdenstr. 3
72768 Reutlingen
Germany

Phone +49 (0) 7121 1432-10
E-Mail spectra@spectra.de
Web www.spectra.de

Sales team Industry PC Systems

Phone +49 (0) 7121 1432 -165
E-Mail sales@spectra.de



Spectra GmbH & Co. KG

Gewerbepark Ost 1
4621 Sipbachzell (Wels)
Austria

Phone +43 (0) 7240 20190
E-Mail info@spectra-austria.at
Web www.spectra-austria.at



Spectra (Schweiz) AG

Flugplatzstr. 5
8404 Winterthur
Switzerland

Phone +41 (0) 43 27710-50
E-Mail info@spectra.ch
Web www.spectra.ch



spectra
Industrie-PC & Automation