

DC-PD

PoE+ Module

User's Manual

Edition 1.1

2017/12/06



Copyright

Copyright 2017, all rights reserved. This document is copyrighted and all rights are reserved. The information in this document is subject to change without prior notice to make improvements to the products.

This document contains proprietary information and protected by copyright. No part of this document may be reproduced, copied, or translated in any form or any means without prior written permission of the manufacturer.

All trademarks and/or registered trademarks contains in this document are property of their respective owners.

Disclaimer

The company shall not be liable for any incidental or consequential damages resulting from the performance or use of this product.

The company does not issue a warranty of any kind, express or implied, including without limitation implied warranties of merchantability or fitness for a particular purpose.

The company has the right to revise the manual or include changes in the specifications of the product described within it at any time without notice and without obligation to notify any person of such revision or changes.

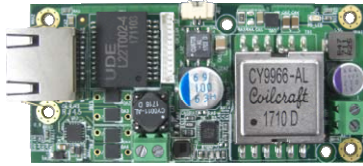
Trademark

All trademarks are the property of their respective holders.

Any questions please visit our website at <http://www.commell.com.tw/>

Packing List:

Please check the package content before you starting using the adapter.



1 x DP-PD-5VR/T or DC-PD-12VR/T



1 x DC Output Power Cable
(OALDC-DC3/1040614)



For use with COMMELL Mini card [MPX-350](#)

1 x CN_LAN Cable(OALPOE-02/1040628)



For use with COMMELL Mini card [MPX-210D](#)

1 x CN_LAN Cable(OALPOE-03/1040629)

1. < Product Specification

Product Description

	RJ45 for connecting with PSE
Interface	Internal 12-pin head for connecting with MPX-350 or MPX-210D Internal 2-pin terminal block for DC input of powered board
Accessories	OALPOE-02 and OALPOE-03 for MPX-350 or MPX-210D OALDC-DC3 for DC output
Dimensions (L x W)	84.05mm x 40.00mm

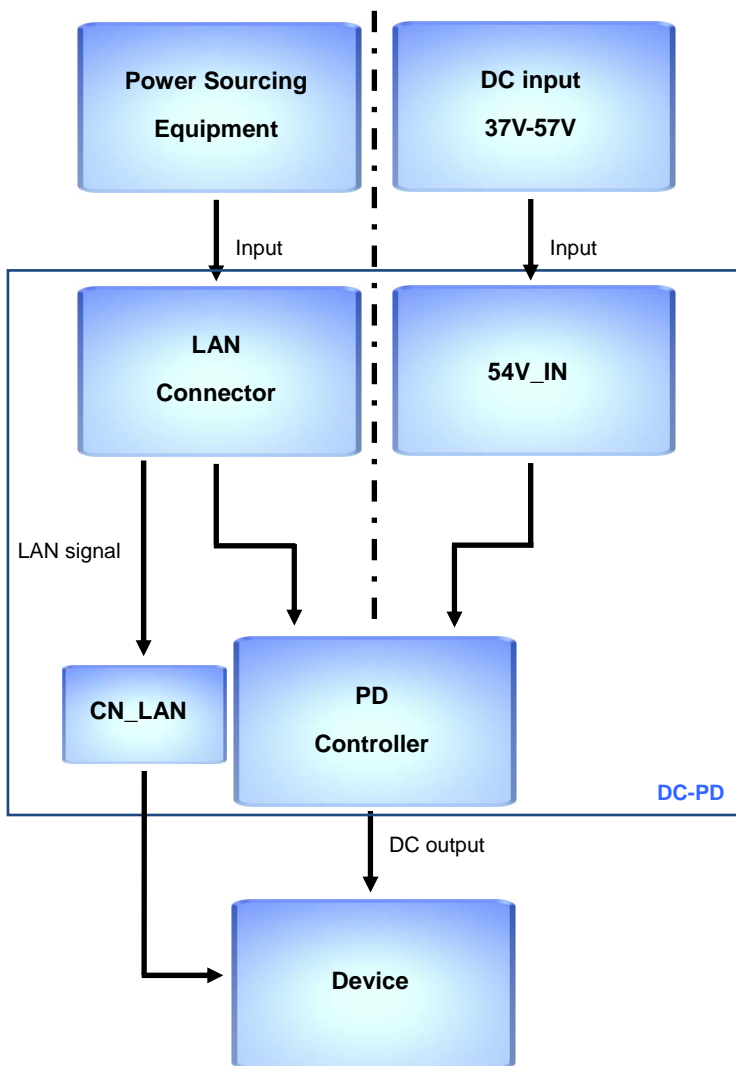
Operating Conditions

Power Requirement	T series DC Input voltages from 37V to 57V R series from Power Sourcing Equipment
Controller Temperature	-40~+85°C

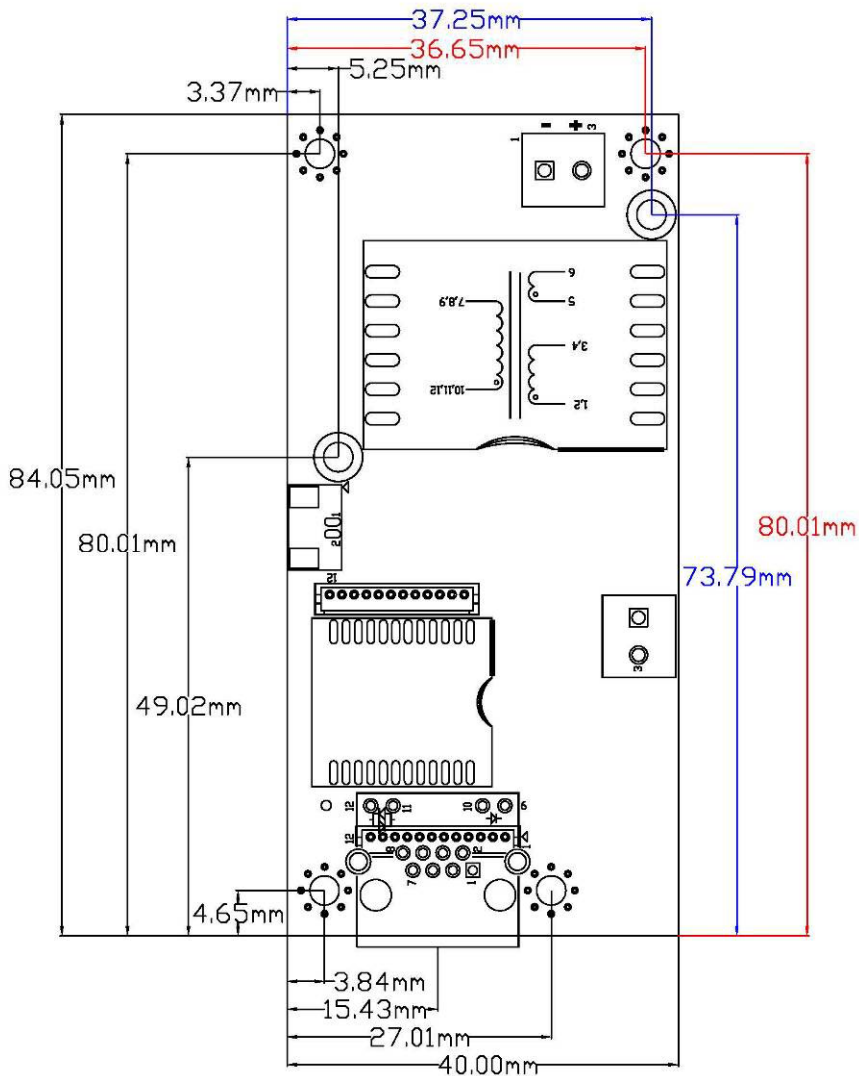
Ordering Code

DC-PD-5VT :	Compliant IEEE802.3at/af, with Terminal Block, DC Output 5V / 7A
DC-PD-5VR :	Compliant IEEE802.3at/af, with RJ45 connector, DC Output 5V / 7A
DC-PD-5VR-02 :	Compliant IEEE802.3at/af, with RJ45 connector, with miniPCle MPX-350 , DC Output 5V / 7A
DC-PD-5VR-03 :	Compliant IEEE802.3at/af, with RJ45 connector, with miniPCle MPX-210D , DC Output 5V / 7A
DC-PD-12VT :	Compliant IEEE802.3at/af, with Terminal Block, DC Output 12V / 6A
DC-PD-12VR :	Compliant IEEE802.3at/af, with RJ45 connector, DC Output 12V / 6A
DC-PD-12VR-02 :	Compliant IEEE802.3at/af, with RJ45 connector, with miniPCle MPX-350 , DC Output 12V / 6A
DC-PD-12VR-03 :	Compliant IEEE802.3at/af, with RJ45 connector, with miniPCle MPX-210D , DC Output 12V / 6A

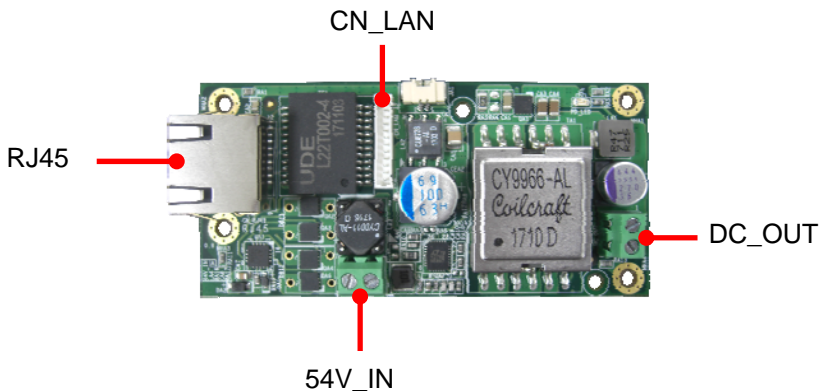
2. < Block Diagram >



3. < Mechanical Drawing >



4. < Connector Location and Reference >



Connector	Function
CN_LAN	12-pin Ethernet Connector
RJ45	RJ-45 LAN Port
54V_IN	2-pin power output with Terminal Block
DC_OUT	2-pin power output with Terminal Block

4.1 <Power Input>

Note : DC input used by T series modules

Connector : 54V_IN

Pin	Description	Pin	Description
1	GND	3	Power input



4.2 <Power Output>

Connector : DC_OUT

Pin	Description	Pin	Description
1	GND	3	Power output

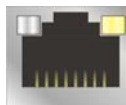
For DC-PD-5V , with **+5V / 7A** Output

For DC-PD-12V , with **+12V / 6A** Output



4.3 <PoE Input>

LAN Connector : RJ45



8 1

Pin	Description	Pin	Description
1	MI0+	2	MI0-
3	MI1+	4	MI2+
5	MI2-	6	MI1-
7	MI3+	8	MI3-
9	LINKLED	10	ACTLED
11	LINK100	12	LINK1000
13	GND	14	GND

Connector : CN_LAN



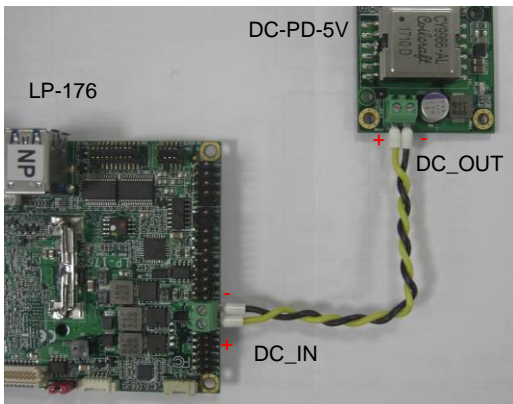
12 1

Pin	Description	Pin	Description
1	ACTLED	2	LINK0
3	RTD0+	4	RTD0-
5	RTD1+	6	RTD1-
7	RTD2+	8	RTD2-
9	RTD3+	10	RTD3-
11	LINK1H	12	LINK1G

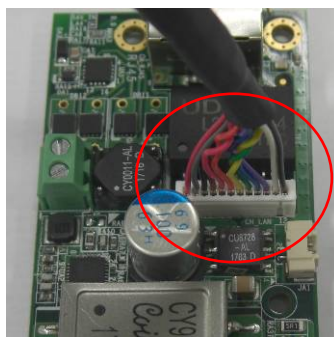
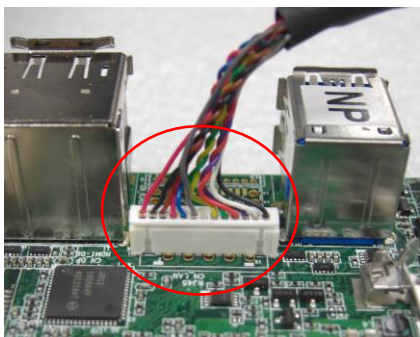
5. < DC-PD Installation Guide >

Following implement to use DC-PD with “COMMELL's PICO M/B(LP-173 or LP-176) for complies as PoE Power Device.

1. DC cable connection between DC-PD and Motherboard
(Connect DC-PD-5V “DC_OUT” to LP-176 “DC_IN”).



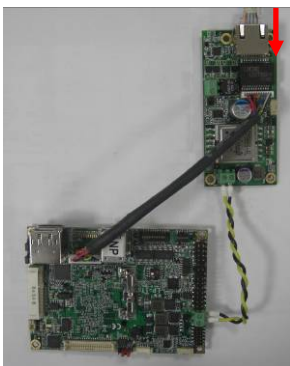
- 2-2. Plug PoE cable(OALPOE-01) to LP-176 and DC-PD .



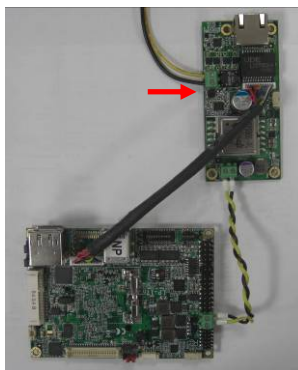
2-3. (A)Connect RJ45 connector from PSE to DC-PD via LAN cable .

(B)Connect Terminal Block from Power Supply .

(A) Input from PSE

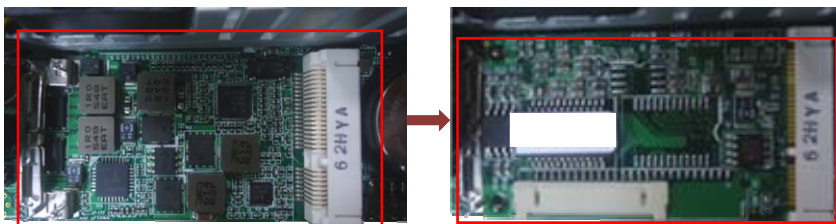


(B) Input from DC_54V

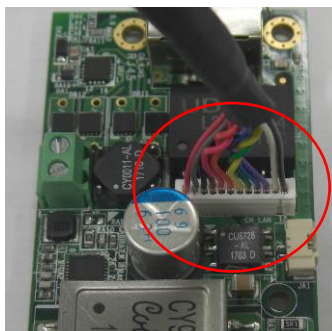
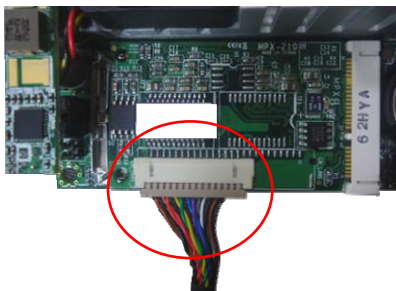


3. The procedures shows how assembly COMMELL's Mini_PcLe LAN Card([MPX-350](#) 、 [MPX-210D](#)) on “COMMELL's PICO M/B(LP-173 or LP-176)

3-1. Insert COMMELL Mini_PcLe LAN Card(MPX-210D) on Motherboard.



3-2.Plug PoE cable(OALPOE-03) to MPX-210D and DC-PD , refer step 1 for DC connection , then ready for use .



Contact information

Any advice or comment about our products and service, or anything we can help you please don't hesitate to contact with us. We will do our best to support you for your products, projects and business.

Taiwan Commate computer Inc.

Address	19F., NO.94, Sec. 1, Xintai 5 th Rd., Xizhi Dist., New Taipei City 22102, Taiwan.
TEL	+886-2-26963909
FAX	+886-2-26963911
Website	www.commell.com.tw
E-mail	info@commell.com.tw (General information) tech@commell.com.tw (Technical Support)

Commell is a brand name of Taiwan Commate computer Inc.